



# Demographics of the Danish Dog Population

Jens Frederik Agger<sup>1</sup>, Jørgen Damkjer Lund<sup>1,2</sup>, Malene Thuesen Hoffgaard<sup>1,3</sup>

<sup>1</sup>Dept. of Large Animal Sciences, Faculty of Life Sciences, University of Copenhagen,  
<sup>2</sup>Danish Raw Feeding Center, Glostrup, and <sup>3</sup>Esbjerg Animal Hospital, Denmark

## Aim

To describe the Danish dog population and dynamics with respect to population size, dog and breed registration, geography, kennel clubs and pedigree recording, survival, and illustrations of production environment.

## Material & methods

Data have been obtained from databases of the Danish Dog Register, kennel and dog associations, and from individual surveys.

## Abstract and conclusions

- The Danish dog population comprises about 580,000 live dogs. Since 1993 all dog owners must register their dogs in the Danish Dog Register.
- About 20- 25 % of the Danish families have dogs.
- The majority of puppies are sold directly from the breeders, and no puppies are sold from pet shops. The pictures are examples of dog breeding and environment at professional breeders and in private house holds.
- Dogs are un-evenly distributed (Fig. 1) with low numbers per house hold in large cities and generally higher in smaller communities.
- The interest in keeping dogs is increasing (Fig. 2). In 2006 about 63,000 dogs were added to the registry. The diversity in breeds has also increased - with about 240 different breeds represented in annual new registrations in the Danish dog register (Fig. 3). However, the top 20 popular breeds comprise 51.5% of the dog population (Table 1) and about 55% of the dogs are recorded by pedigree organizations (Table 2). For the whole country it is estimated that about 25% pure bred dogs are not recorded in a pedigree, and that about 21% are mixed breeds. For comparison Fig. 4 shows the distribution according to pedigree for 75,000 new dogs in 2007.
- The average life span of a dog (Fig. 5) has increased from 10 years in 1999 to 11 years in 2007.

Figure 1. Distribution of dogs in The Danish Dog Register

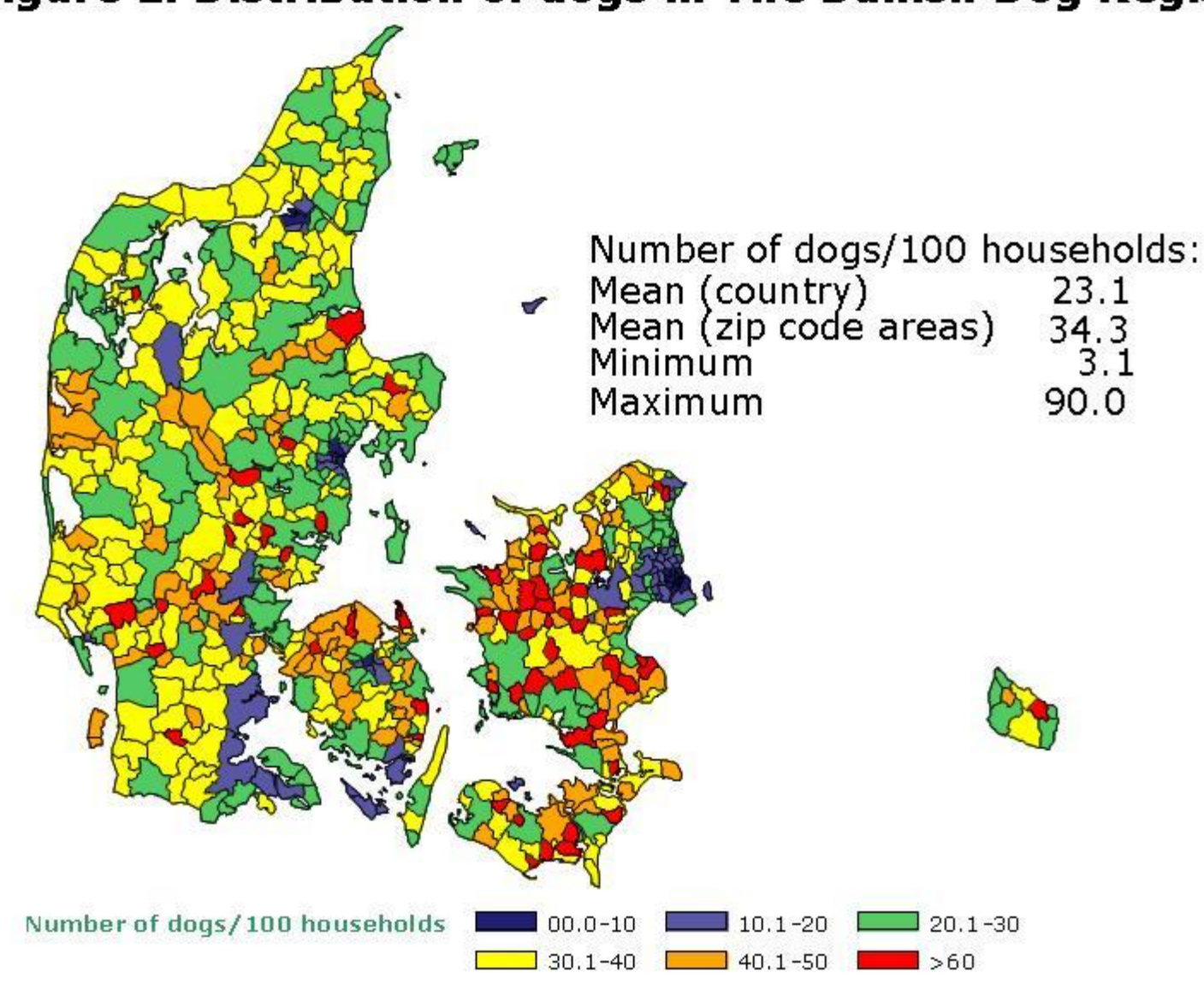


Figure 2. Dogs added to The Danish Dog Register per year

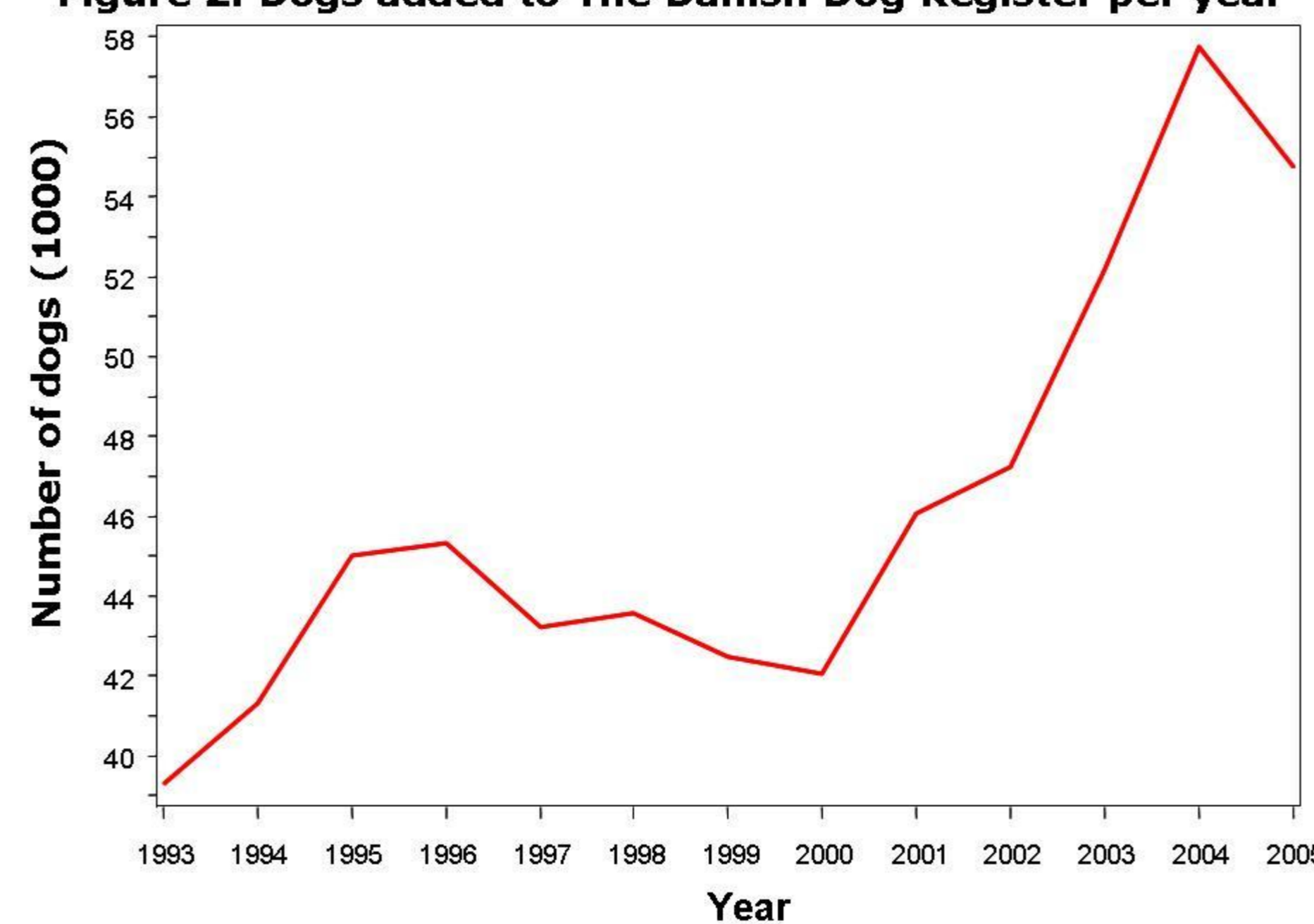
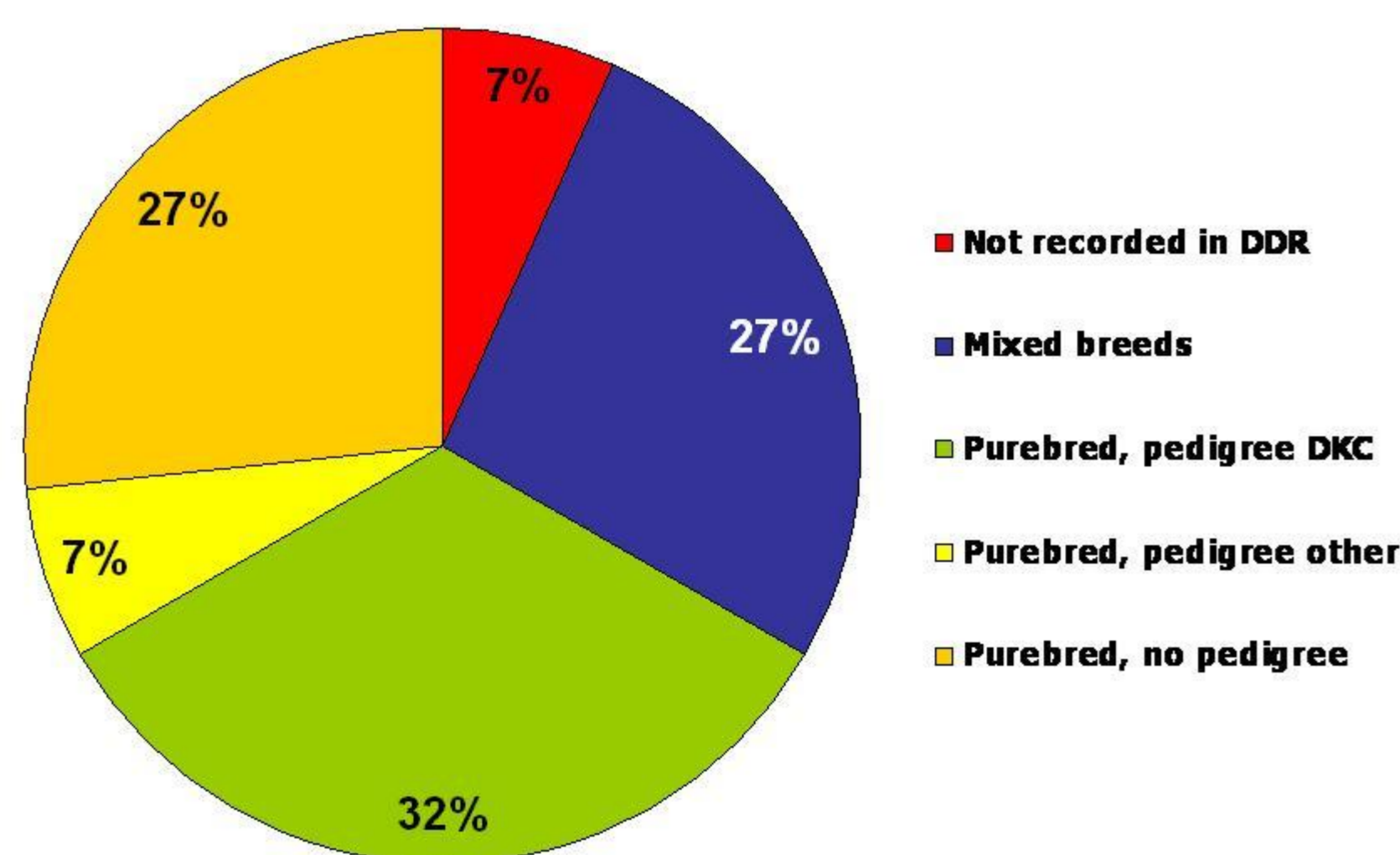


Figure 3. Breeds added to the Danish Dog Register per year



Figure 4. Distribution of 75,000 new dogs in year 2007 according to pedigree



Source: The Danish Kennel Club

Table 1. The top 20 dog breeds in the Danish Dog Register.

Nr.	Breed	% of pop.
1	Labrador Retriever	13.1
2	German Shepherd Dog	7.8
3	Golden Retriever	4.0
4	Dansk-Svensk Gaardhund	2.7
5	Cocker Spaniel	2.4
6	German Wire-haired Pointing Dog	2.3
7	Rottweiler	2.0
8	Cairns Terrier	2.0
9	West Highland White Terrier	1.9
10	Wire-haired Dachshund	1.8
11	English Springer Spaniel	1.7
12	Kleiner Münsterländer	1.2
13	Short-haired Dachshund	1.2
14	German Short-haired Pointing Dog	1.2
15	Cavalier King Charles Spaniel	1.1
16	Beagle	1.0
17	Long-haired Miniature Dachshund	1.0
18	Flat Coated Retriever	0.9
19	Collie	0.9
20	Border Collie	0.9
Other	Other dogs	48.9

Figure 5. Expected survival of Danish dogs in 1999 and 2007

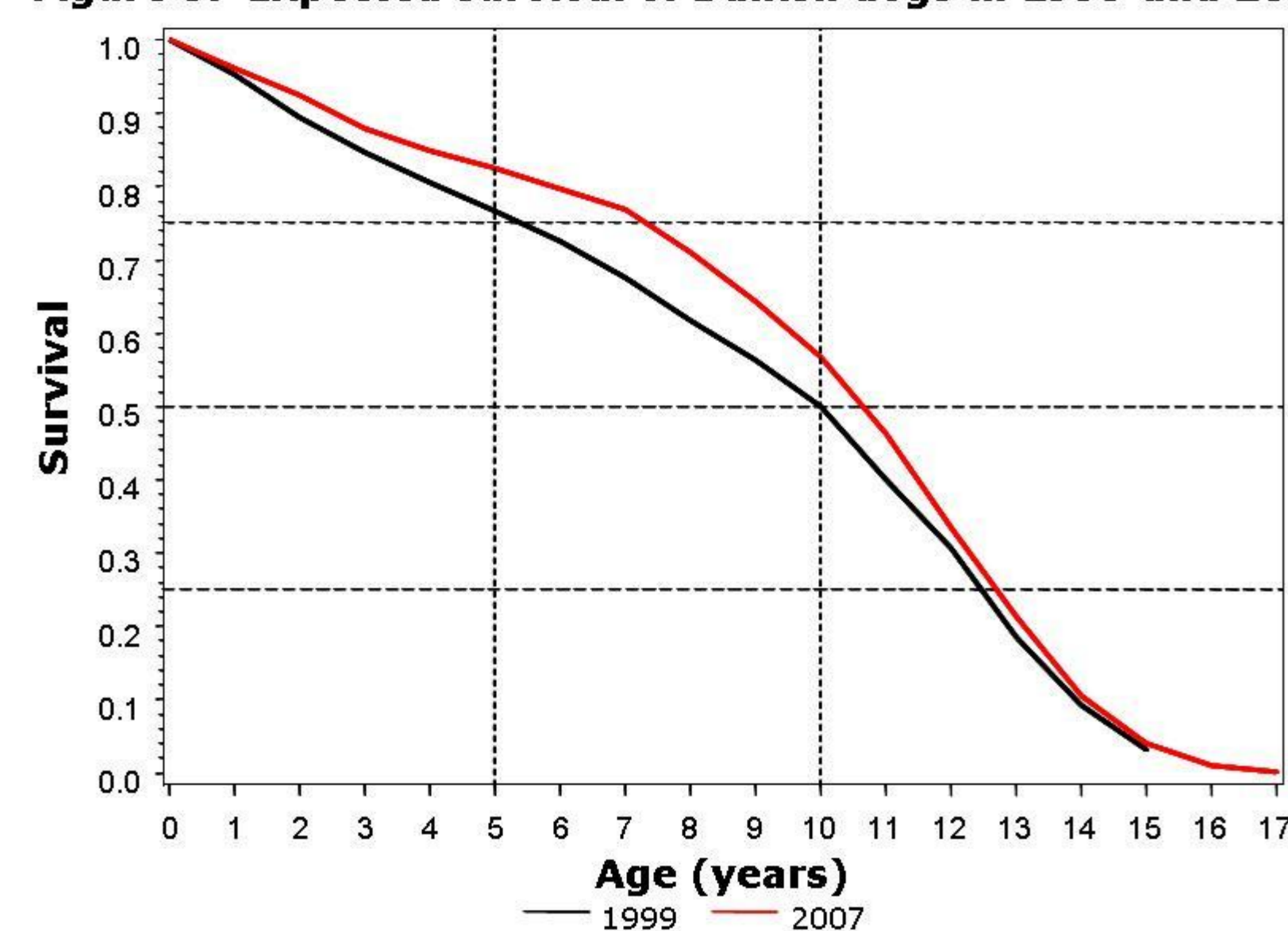


Table 2. Danish dog associations with pedigree recording

Association	Dogs	% dogs	Kennels	Local clubs	# breeds
Danish Kennel Club	220,000	39.3	5,000	74	227
Danish Dog Breed Union	40,000	7.1	88	4	131
Danish Dog Owners Assoc.	15,000	2.7	37	3	30
Danish Dog Breed Club	2,000	0.4	28	-	-
Danish Dog Association	5,000	0.9	24	-	20
Danish Hunting Dog Assoc.	30,000	5.4	-	-	-
Danish Sporting Dog Assoc.	500	0.09	12	5	27

## Four picture examples from Danish dog production and environment

