

# Perception of PRRS as a risk by producers from west of France

Julien Le Palud, Nathalie Chatelier, Philippe Blanquefort, Cyril Boulay, Dominique Pécaud, Nicolas Rose and Catherine Belloc

catherine.belloc@oniris-nantes.fr

UMR 1300, INRA, ONIRIS, Bio-aggression, Epidemiology and Risk Analysis (BioEpar), Nantes, France

## Context and Objectives

PRRS is a key issue in swine production for both medical and economic consequences of the infection.

Control measures include biosecurity and management measures. Compliance of producers to advices concerning these measures is highly dependent on the way the infection.

The aim of this study was to investigate the way producers consider PRRS through a survey carried out in the main French pig production area (*i.e.* North West of France).

## Material and Methods

Fifty-eight producers whose herd was either (i) PRRSv negative, (ii) PRRSv positive or (iii) under plan to become negative were investigated.

A questionnaire was elaborated to collect information about

- ✓ Producers' knowledge about PRRS clinical expression
- ✓ Producers' knowledge about risk factors for herd infection by PRRSv
- ✓ How concerned they feel about PRRS

For each topic answers were obtained following two steps:

- Firstly spontaneous answers were collected
- Secondly producers had to comment statements by classifying clinical signs and biosecurity measures/ risk factors according to their importance

## Results and Discussion

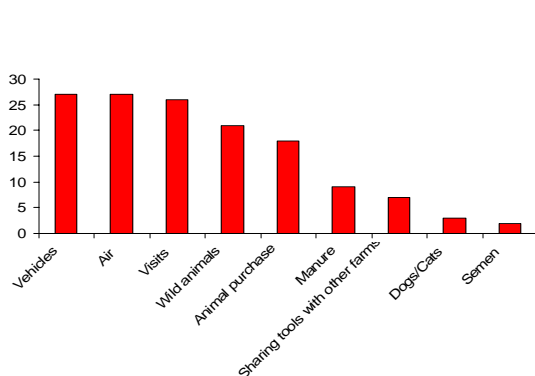


Fig 1 : Herd contamination routes spontaneously stated by producers

Vehicles, air and visits are considered as the most important routes of introduction of PRRSv

Animal purchase is less spontaneously cited but is qualified as "important" by the highest number of farmers when questioned about

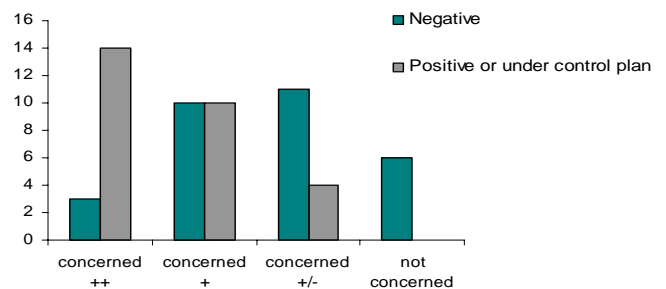


Fig 2: Level of concern depending on the herd PRRSv status

- ++ : very concerned : the farmer is afraid of becoming positive / is motivated for PRRSv elimination
- + : PRRSv status is important
- +/- : passive behavior regarding PRRSv status
- Not concerned : PRRSv is not an issue

Association between level of concern and PRRSv status of the farm

## Conclusion

- Heterogeneous perception
- Influence of self experience (current or former PRRSv status / biosecurity measures actually applied on the farm)