

# IMPACT OF FLOORING ON PIG HEALTH AND WELFARE: PREVALENCE OF LIMB LESIONS



A.L. KilBride, C.E. Gillman, L.E. Green

Ecology and Epidemiology Group, Biological Sciences, University of Warwick, Coventry, CV4 7AL

E-Mail: a.kilbride@warwick.ac.uk

## Introduction

### Project aims

- Assess the health and welfare of pigs on all commonly used floor types
- Investigate the impact of forthcoming EC directives on the slat and slot size of concrete floors

### Background

- Physical damage to the limbs caused by the floor is common in all ages of pig
- An ideal floor for pigs is hygienic, comfortable and neither abrasive nor slippery

### Current work

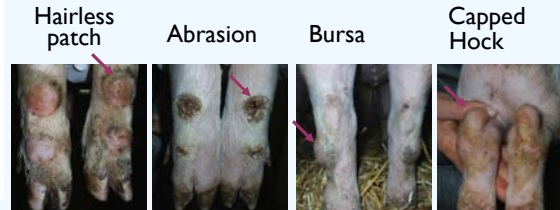
- Prevalence of each type of limb lesion:
- By age
  - By indoor or outdoor (soil floor) housing

## Materials and Methods

### Study design

- Cross sectional study 2003-2004
- Farms randomly selected from quality assurance scheme databases
- Sample stratified by age 1-22 weeks
- 10 pigs examined at each age sampled

### Types of limb lesion



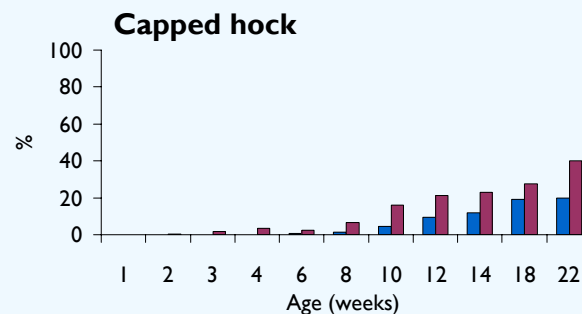
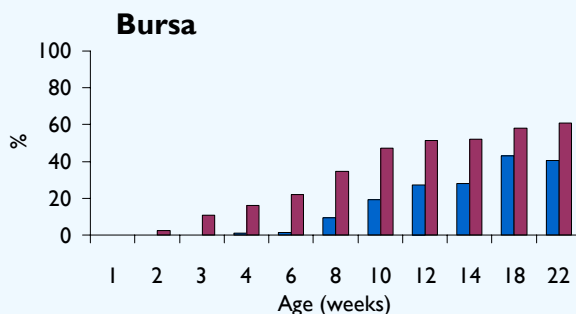
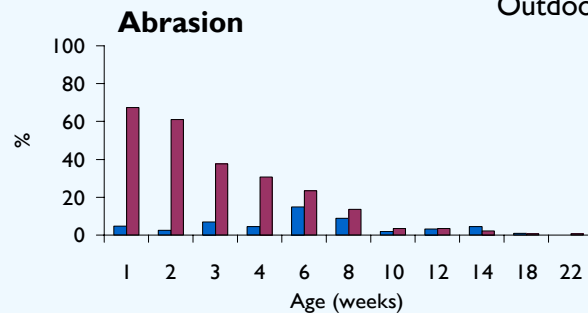
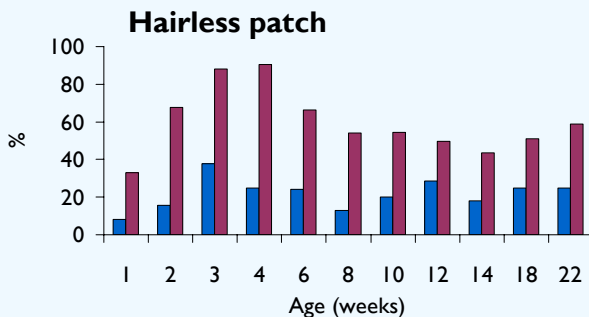
### Sample sizes

	Farms	Pens	Pigs
Indoor	83	814	8037
Outdoor	17	149	1429
<b>Total</b>	<b>100</b>	<b>963</b>	<b>9466</b>

## Results

Prevalence is measured by the presence of the lesion on one or more of the pigs limbs

Indoor ■  
Outdoor ■



## Summary

### Summary

- Prevalence of all types of limb lesions is lower in outdoor housed pigs throughout the age range studied
- This is probably because soil can provide a floor that is soft, nonabrasive and non-slip

### Future work

- Identify risk factors for limb lesions from observational data collected on:
- Construction of the floor
  - Condition of the floor
  - Bedding use
  - Management factors

### Acknowledgements

- Funded by DEFRA (AWO135)
- Assured British Pigs and Quality Meat Scotland
- Participating farmers
- Project research staff and field technicians