

3 years of existence for the French Platform for epidemiological surveillance in animal health

MARCE C.^(1*), HENDRIKX P.^(2*) FEDIAEVSKY A.^(1*), CALAVAS D.^(3*)

(1) Ministry of agriculture, Directorate general for food, Animal health bureau, Paris, France

(2) French Agency for Food, Environmental and Occupational Health and Safety (Anses), Epidemiological surveillance unit, Maisons-Alfort, France

(3) ANSES, Lyon laboratory, Epidemiology unit, Lyon, France

(*) Members of the coordination team of the French platform of epidemiological surveillance in animal health

One key initiative of the national consultation on the animal health sector held from January to April 2010 in France was “Creating a national Platform for epidemiological surveillance in animal health”

The national Platform for epidemiological surveillance in animal health is the operational entity that is meant to coordinate epidemiological surveillance activities under the responsibility of a National committee for epidemiological animal health surveillance and to produce the epidemiological data needed to provide health risk analysis and to enable management and control of these risks. Its mission is to ensure the smooth running of the epidemiological surveillance systems at a national level including their capacity for quick response.

A common methodological and technical scheme for surveillance

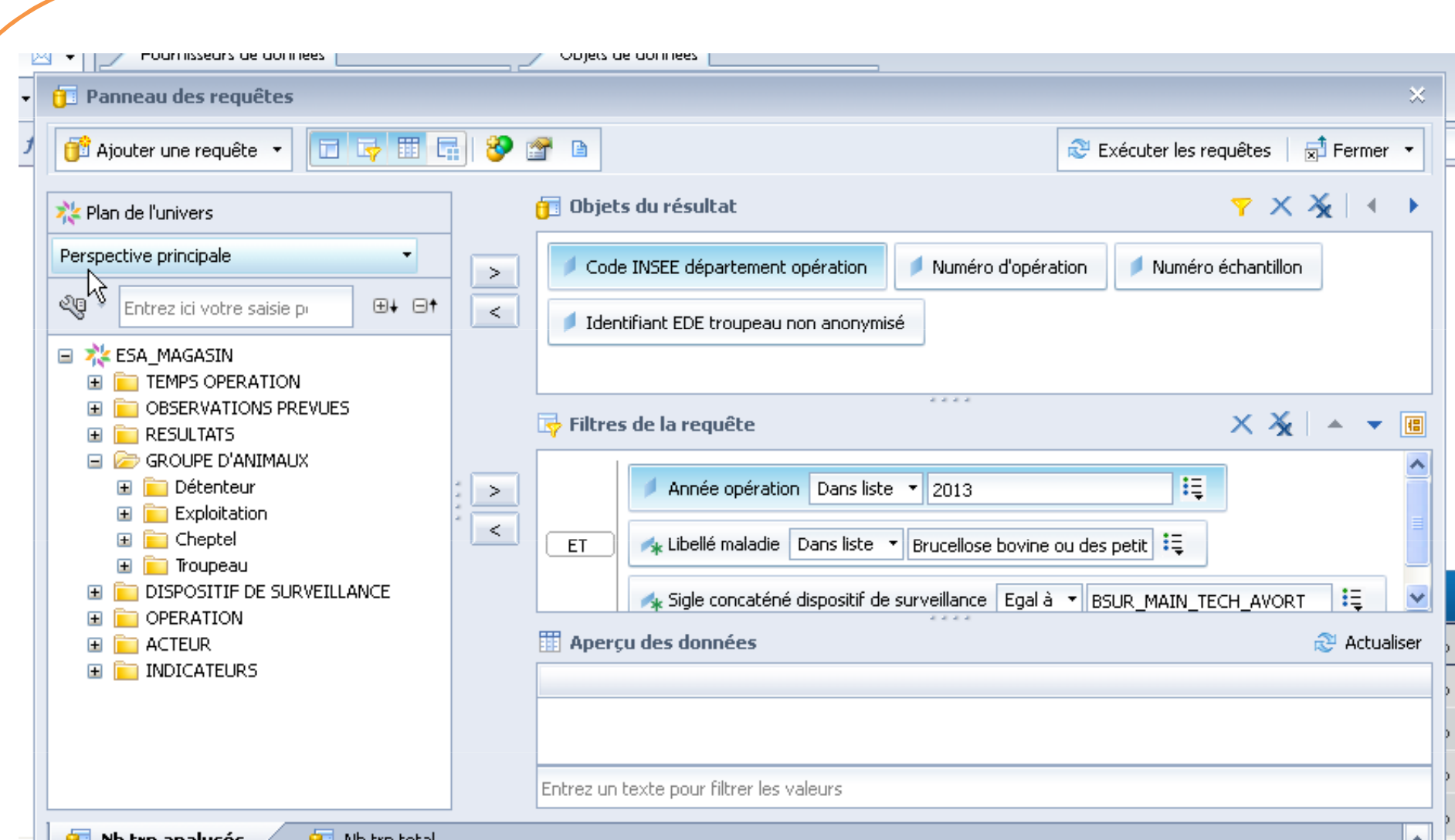
The objective of the Platform is to produce epidemiological information and analyses on animal diseases in order to feed appropriately risk evaluation and risk management decisions. Activities include:

- Contributing to the collection, standardisation and consolidation of animal health data and production of epidemiological reports;
- Assessing the quality of surveillance systems (evaluation and performance indicators) and proposing new protocols or technical improvements to existing protocols;
- Leading and implementing an overall strategy for providing data feedback with a special concern for data contributors;
- Coordinating the pooling of international health risk monitoring data.

Consensus on the need to maintain and further develop the Platform

An assessment of strengths and limits has been performed by all members of the Platform (Figure 1) after two years of operation. Consensus has been reached on the need to maintain this unique collaborative tool of management of surveillance systems in animal health. Further works will define the organisational and financial framework that will allow to draw a sustainable organisation starting from the 1st of January 2016.

Methodological developments



Data warehouse

Development of a data warehouse gathering data from national information systems on animal diseases, national cattle register, etc. for indicator calculation and epidemiological studies



Assessment of surveillance systems

Development of assessment tools for external evaluation and methodologies for the development of performance indicators to monitor the operation of surveillance systems

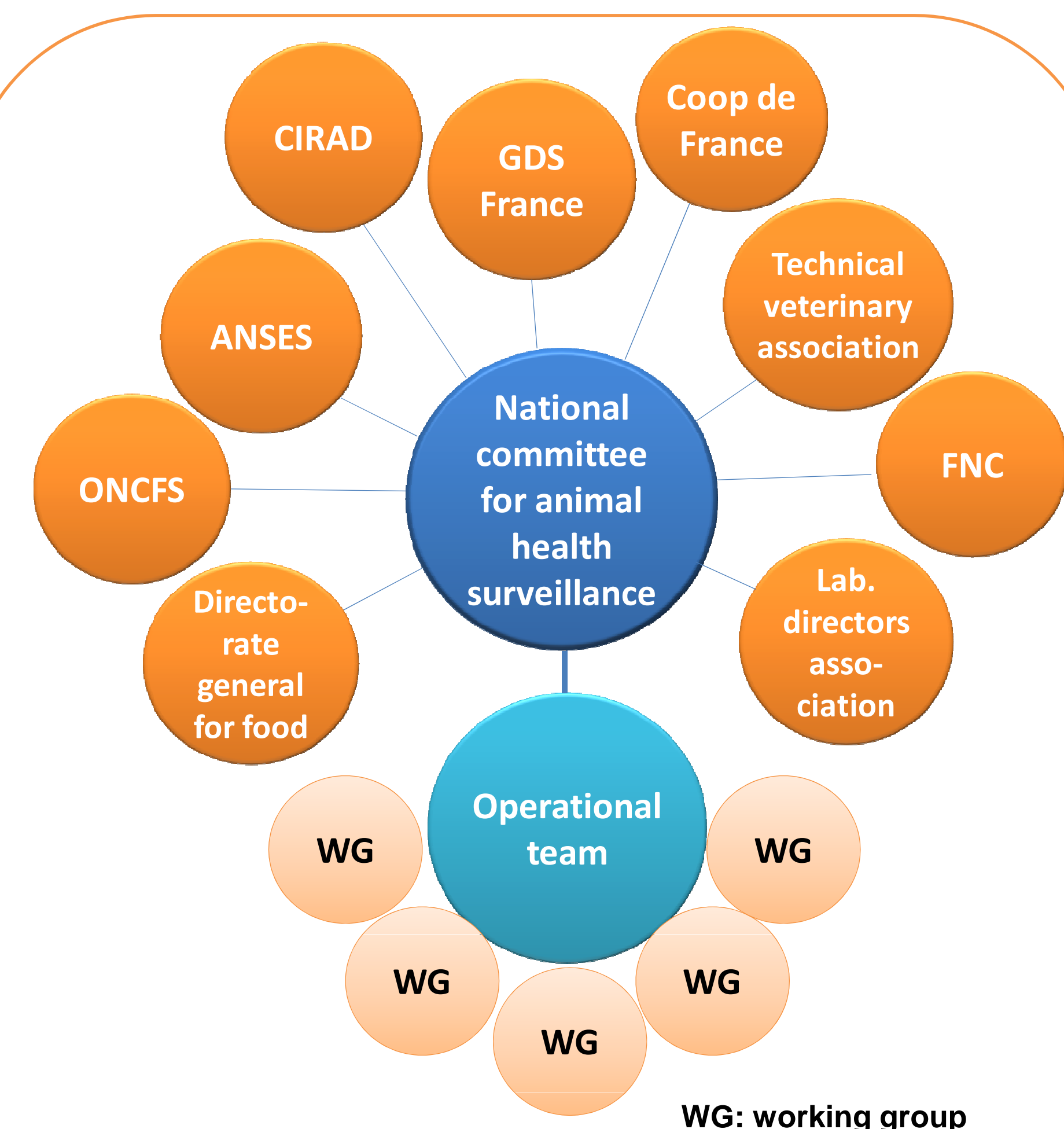
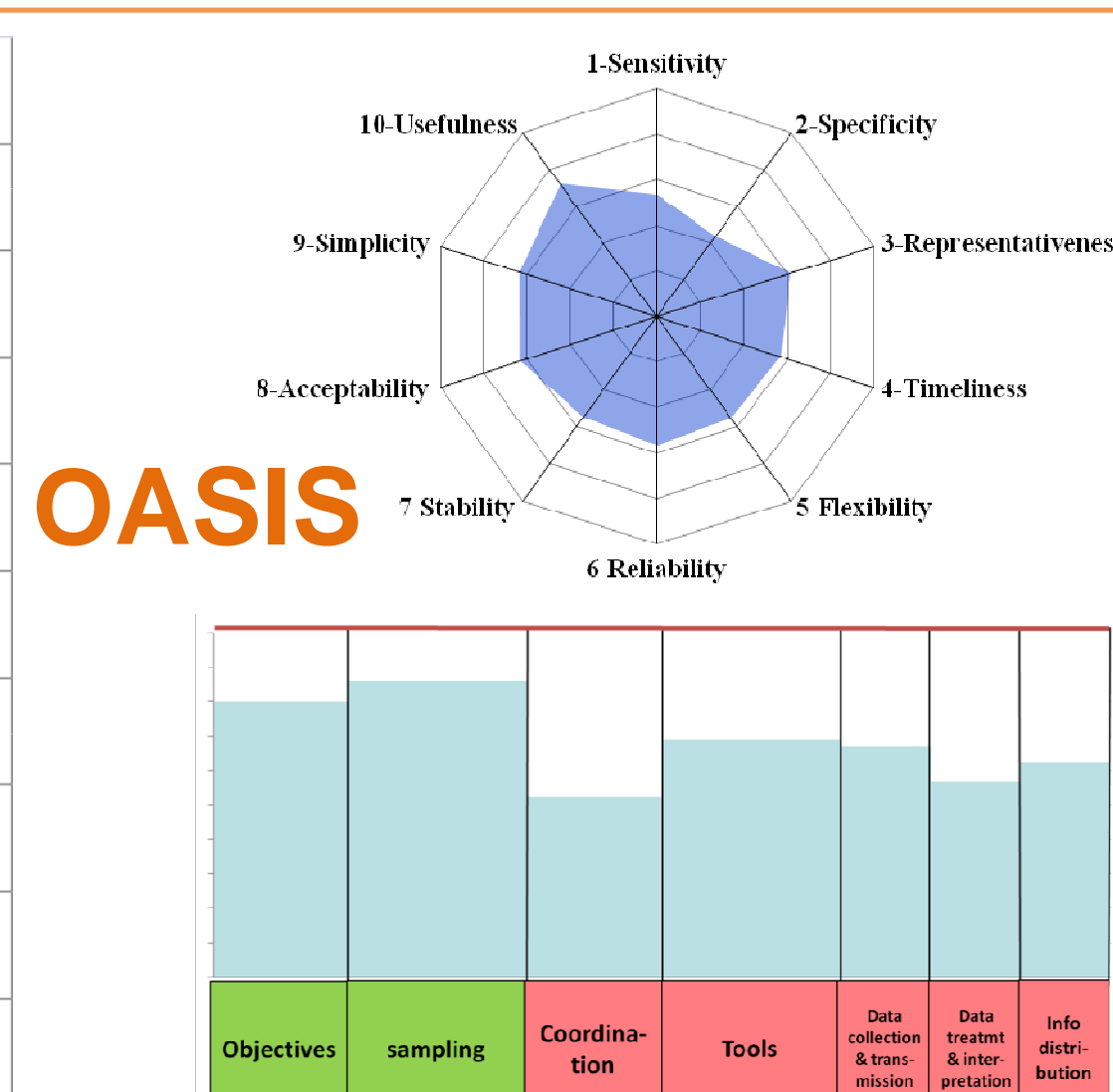


Figure 1: Organisation of the Platform for epidemiological surveillance

The platform joins together entities involved in epidemiological surveillance in animal health, including the Directorate General for Food of the Ministry of agriculture, Anses, Cirad, National office for hunting and wildlife (ONCFS), professional and veterinary organisations (GDS France, Coop de France, National society for veterinary technical grouping – SNGTV – National Hunter Federation - FNC) and laboratories (ADILVA). The national committee defines the priority activities to be implemented by the Platform.



Epidemiological surveillance resource centre

Participatory website presenting activities implemented within the framework of the Platform: www.plateforme-esa.fr

Some priority activities



Bovine tuberculosis

- Interferon gamma protocol
- Implementation of regional epidemiological units

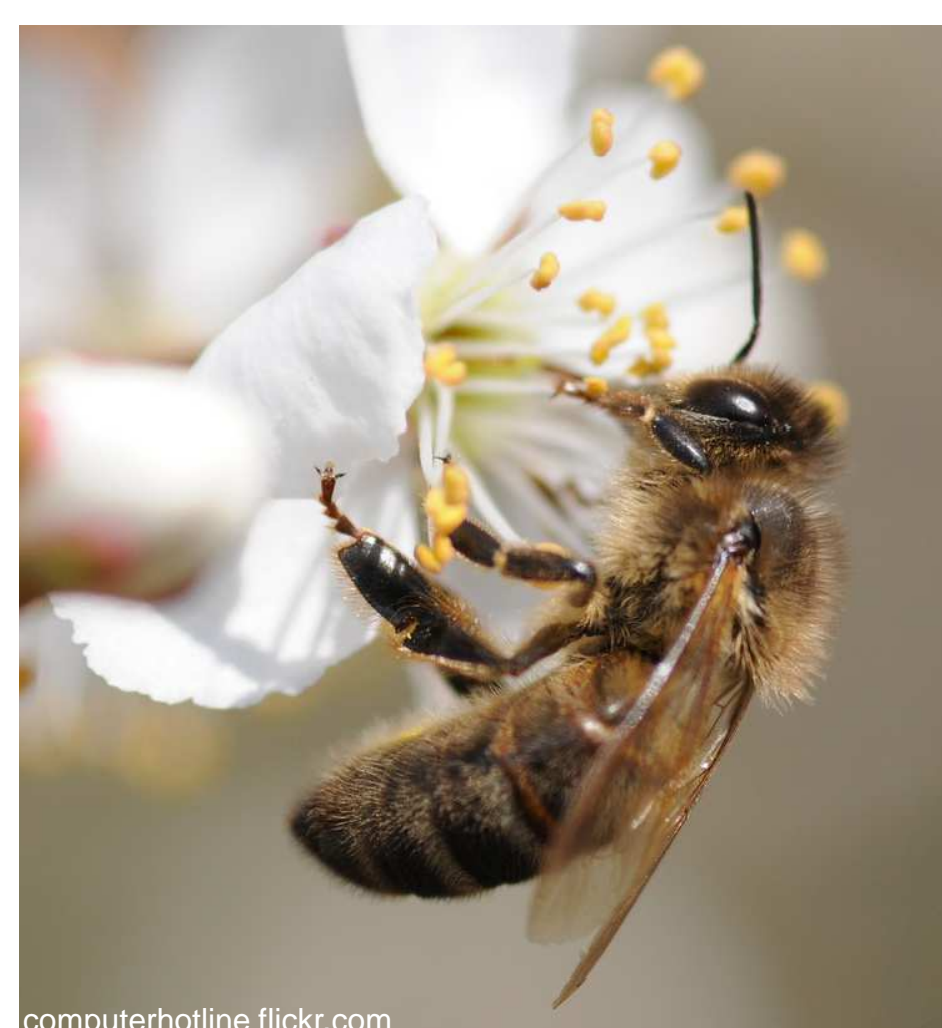
Bluetongue

- Development of epidemiological situation and performance indicators



Bovine tuberculosis in wildlife

- Coordination of the surveillance system
- Data analysis
- Brucellosis surveillance
- Improvement of surveillance protocols of brucellosis in ruminants



Bee diseases and bee mortality

- Implementation of the EU surveillance protocol
- Development of surveillance protocols on pesticides
- Abortion in ruminants
- Evolution of the surveillance system



Schmallenberg

- Follow-up of surveillance
- Data analysis
- Communication

International watch

- Collection of international information on emerging diseases
- Communication of synthetic watch information



Avian influenza

- Implementation of recommendation of OASIS evaluation

Oyster mortality

- Implementation of recommendation of OASIS evaluation



Influenza in swine

- Development of a risk-based surveillance protocol

African swine fever

- Surveillance protocol in abattoirs
- Coordination and data analysis