



The use of Knowledge, Attitude and Practice (KAP) surveys in One Health studies: a scoping review

Ana Dinis, Cláudia Augusto, Filipe Maximiano Alves de Sousa, Alison Burrell, Angela Bearth, Isabel Silva, John Berezowski, Rute Meneses, **L.P. Carmo***

*Norwegian Veterinary Institute, Ås, Norway. luis.pedro.carmo@vetinst.no

Introduction

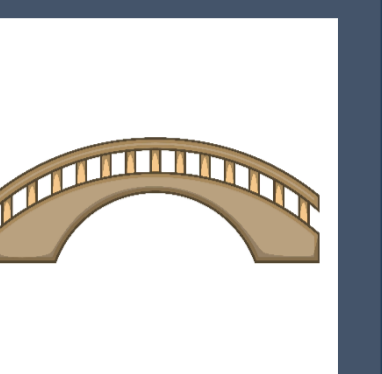
The One Health (OH) approach advocates that complex health challenges should be tackled through holistic systems-thinking that acknowledges the links between the health of humans, animals, and the environment, while simultaneously fostering interdisciplinary collaborations.



KAP surveys aim at assessing population knowledge, attitudes and practices about a specific topic. The results from KAP surveys can inform locally relevant health interventions and provide valuable information on needs, issues, and barriers for the implementation of actions.



KAP surveys can be regarded as a bridge between One Health and Social Sciences. Both fields share a common interest in assessing concepts linked to human behavior and investigate how knowledge, attitudes and practices for a given health problem and context are associated.



Aim

- Document and characterize the existing literature on KAP surveys used in One Health studies;
- Verify whether the relationship between Knowledge, Attitudes and Practices regarding different health problems in various contexts is assessed and, if so, how are those analysis conducted;
- Investigating the strategies/questions used to evaluate Knowledge, Attitudes and Practices;
- Identifying potential gaps, including methodological short-comings, in the use of these surveys that can be overcome by a strengthening collaboration between social and health sciences.

Methods

Search

- Conducted in: Medline, Web of Science and CAB Direct;
- 2 main groups of search terms related to the interest (KAP surveys) and the context (OH studies);
- Wildcards were used according to their availability in the database.

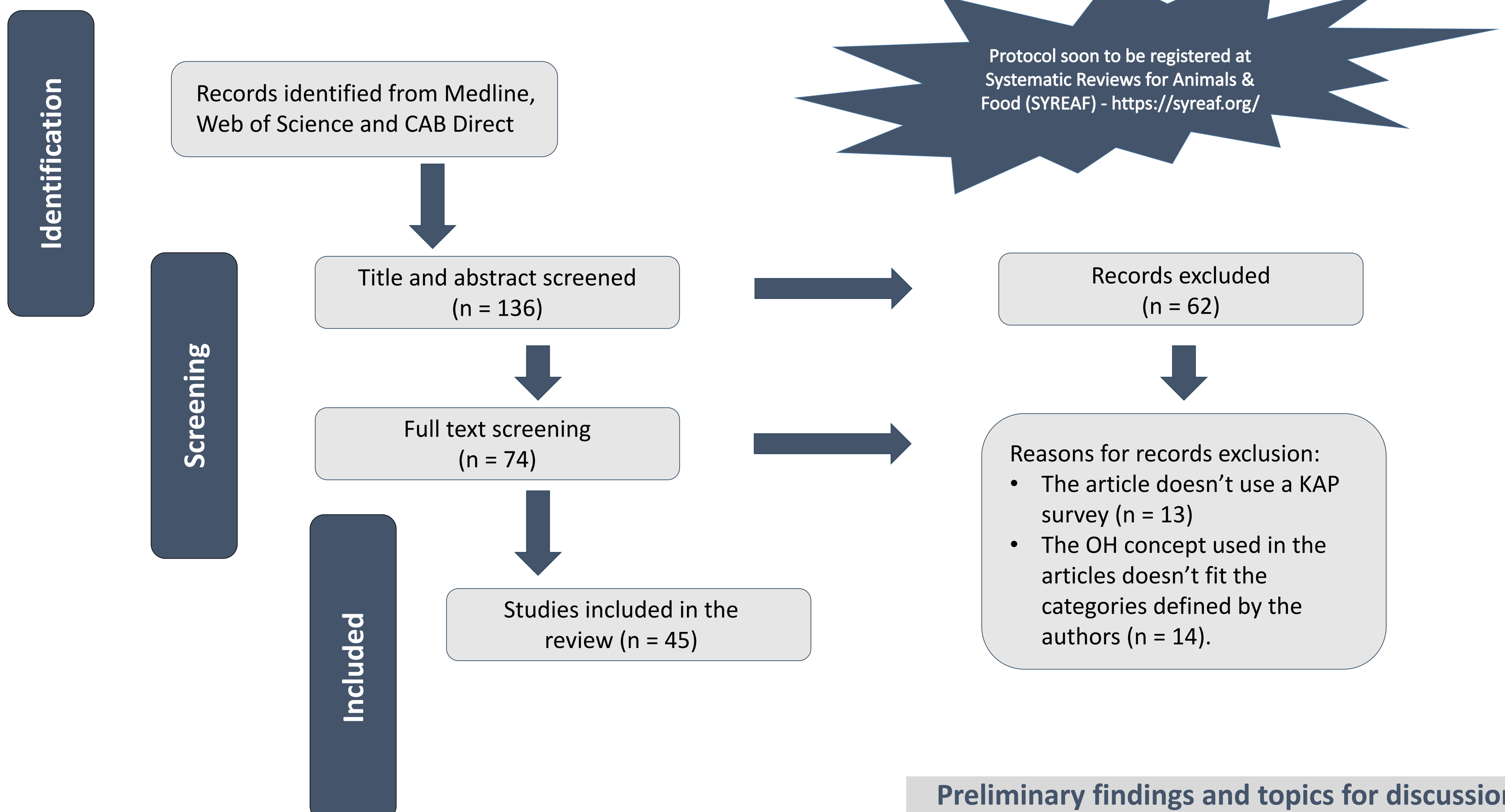
Screening

- 2 steps: title and abstract and full-text screening;
- Calibration exercise done in both steps;
- 4 researchers participated in the screening: 2 from veterinary medicine and 2 from social sciences

Data extraction

- 2 independent reviewers;
- Calibration exercise will be performed;
- Extraction of data related to bibliographic details, study design, survey or KAP related data and study outcomes.

Results



Preliminary findings and topics for discussion

- KAP studies have been extensively used, mainly in Low- and Middle-Income Countries, and focused on a broad range of health hazards;
- We are conducting the data extraction and analysis, which will include a content analysis of the questions used in KAP surveys to identify common themes;
- We will also evaluate the quality of the questions against several criteria. We identified some variability around what authors consider as Knowledge, Attitudes and Practices.