

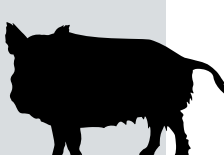



LINDA ERNHOLM

Wild boar at the farm gate

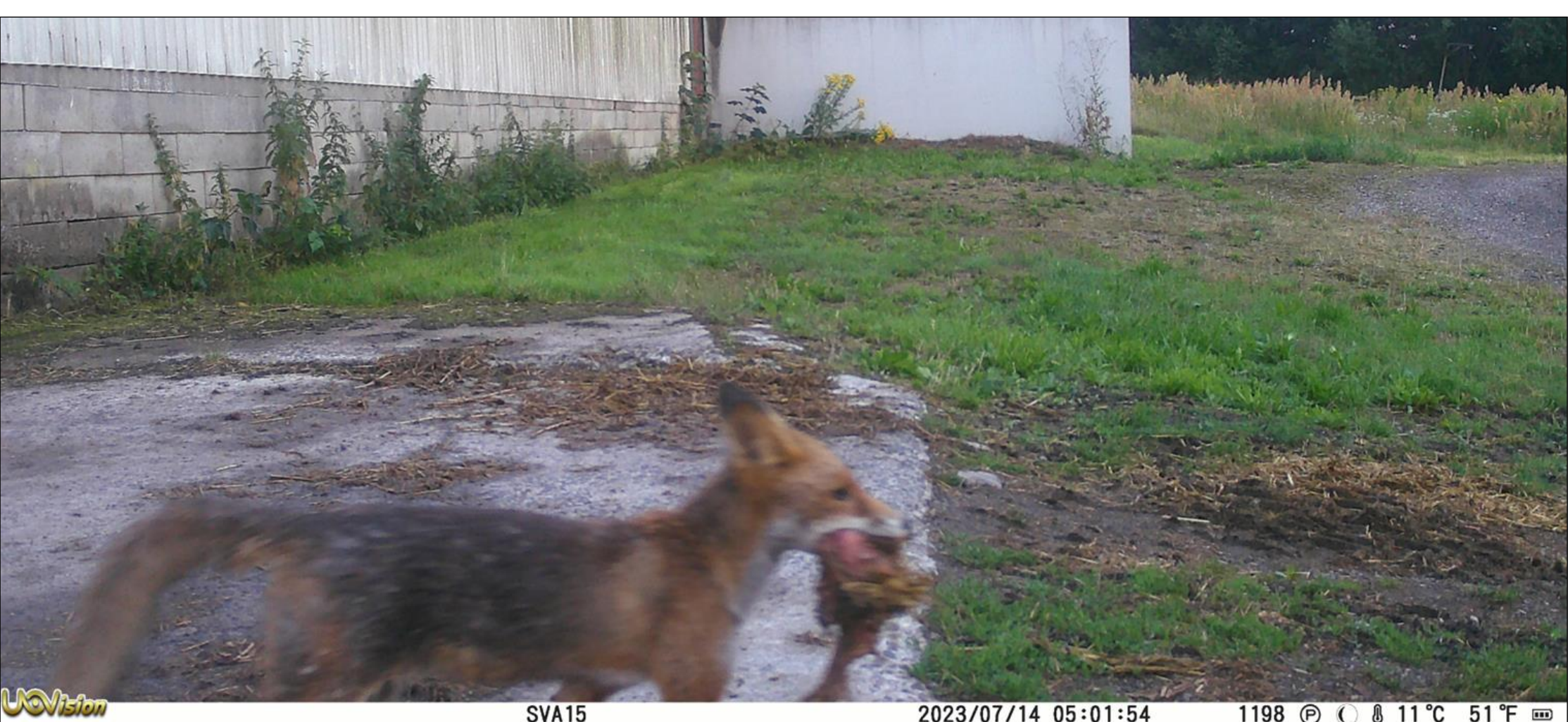
From dusk till dawn - camera trapping at Swedish pig farms



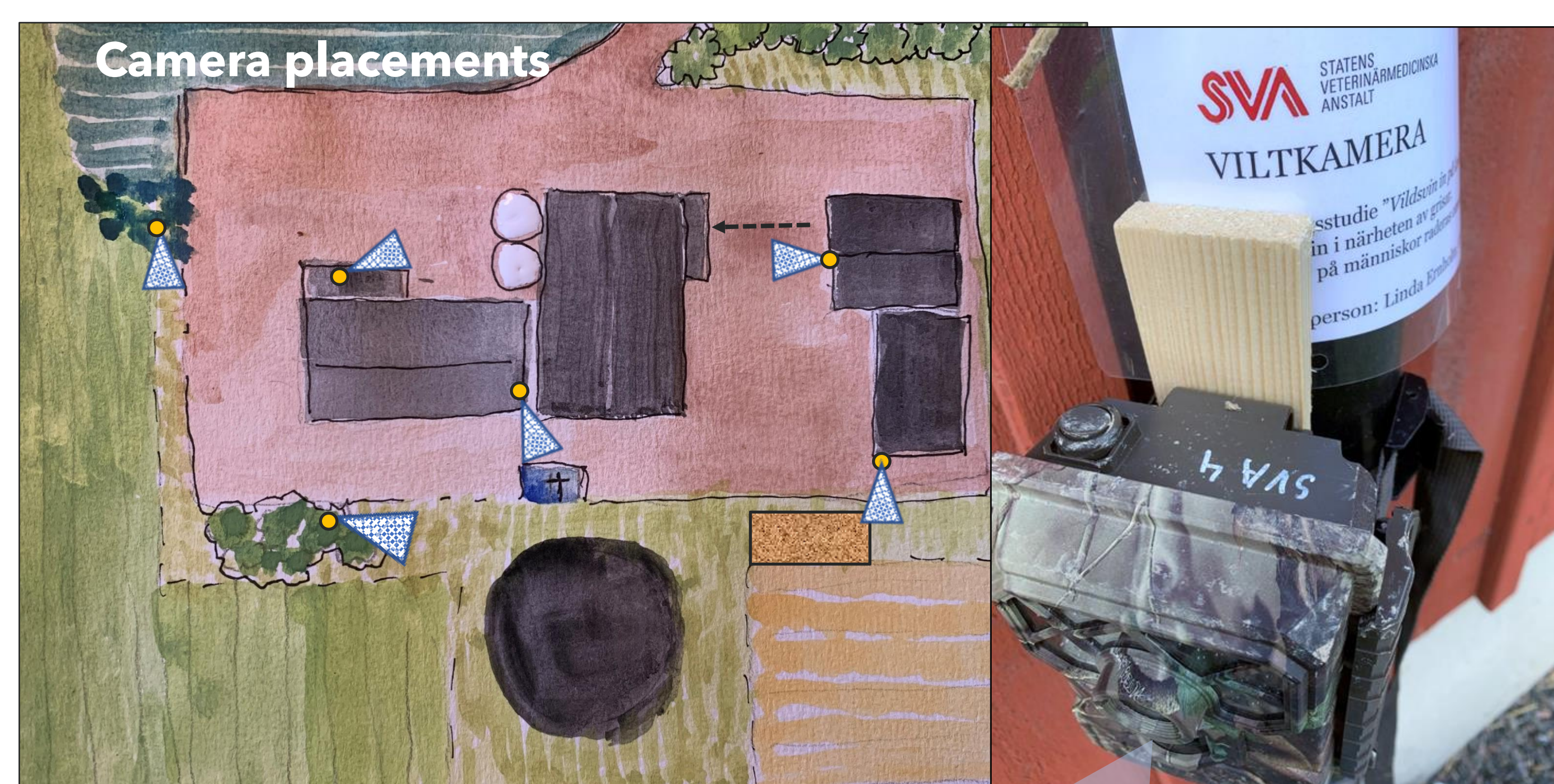
Do wild boar enter pigfarms, and if so, what do they do? 

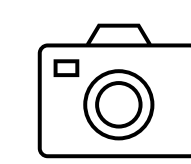
 8 farms in two regions, Södermanland and Skåne, 4-9 cameras 'UOVision' per farm. Cameras were deployed 30-90 nights, June-november in 2022 or 2023, resulting in 2622 camera nights. All farms stated wild boar within 1 km.

One farm of the eight had wild boar visits. Visits occurred repeatedly on five cameras, on three to eleven nights from June to September. A larger family group, more than 10 animals in one picture. Mainly captured while feeding around silos or manure piles and travelling behaviour, moving through.



Foxes hunt for rodents or explore around carcass storage, in manure piles and in straw sheds. Deer move through the farm, or graze. Foxes, deer and wild boar are seen on the same cameras, but not at the same time.



 Feed- and straw storages, carcass bins, manure piles, barn doors open for ventilation, animal loading docks, animal transfer walk ways, passages onto farm yard

Lessons learned:

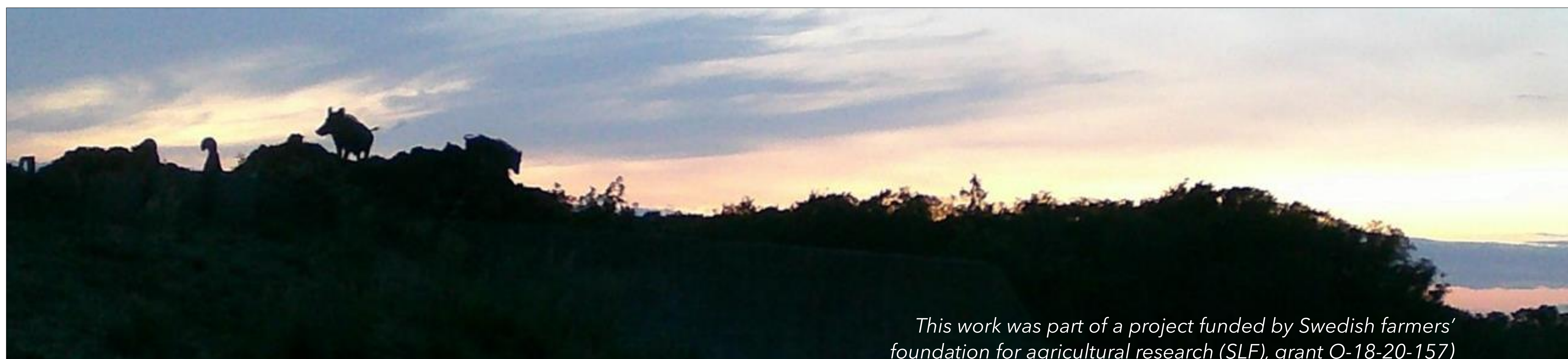
Farm equipment gets moved.

Activities happen at all times of day. And night.

Small wooden wedges, and cameras with frontal preview was crucial, for positioning.

Camera placement will be a compromise between fixing possibilities, adapting to farm work, minimizing by-capture, and still cover point-of-interest.

Spiders and earwigs are everywhere. The amount of data created is substantial. For recruitment of farms, using cameras with no online connection, only photos locally stored on the SD-card, was important information to convince pig producers to participate.



This work was part of a project funded by Swedish farmers' foundation for agricultural research (SLF), grant O-18-20-157