

Madeleine K. Henry^{1*}, Catriona Webster¹, Shannon Proctor¹, Geoff Foster², Judith Evans¹, Sue C. Tongue¹

¹Centre for Epidemiology and Planetary Health, School of Veterinary Medicine, SRUC (Scotland's Rural College), Inverness, Scotland, United Kingdom

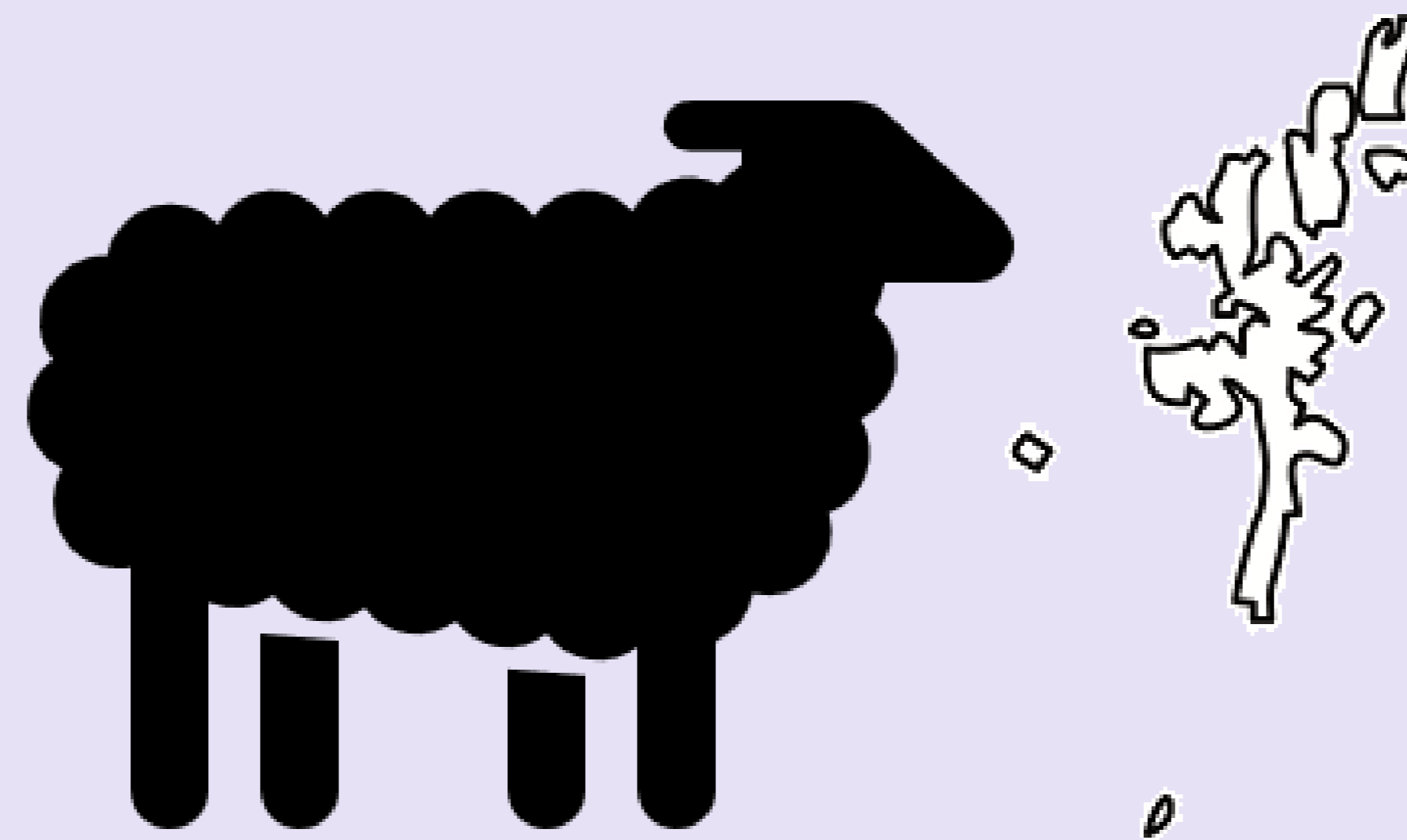
²SRUC Veterinary Services, Scotland's Rural College, Inverness, Scotland, United Kingdom

*Correspondence: madeleine.henry@sruc.ac.uk

4 species

Monthly testing since
2017

One Scottish mainland
abattoir per species



40 samples

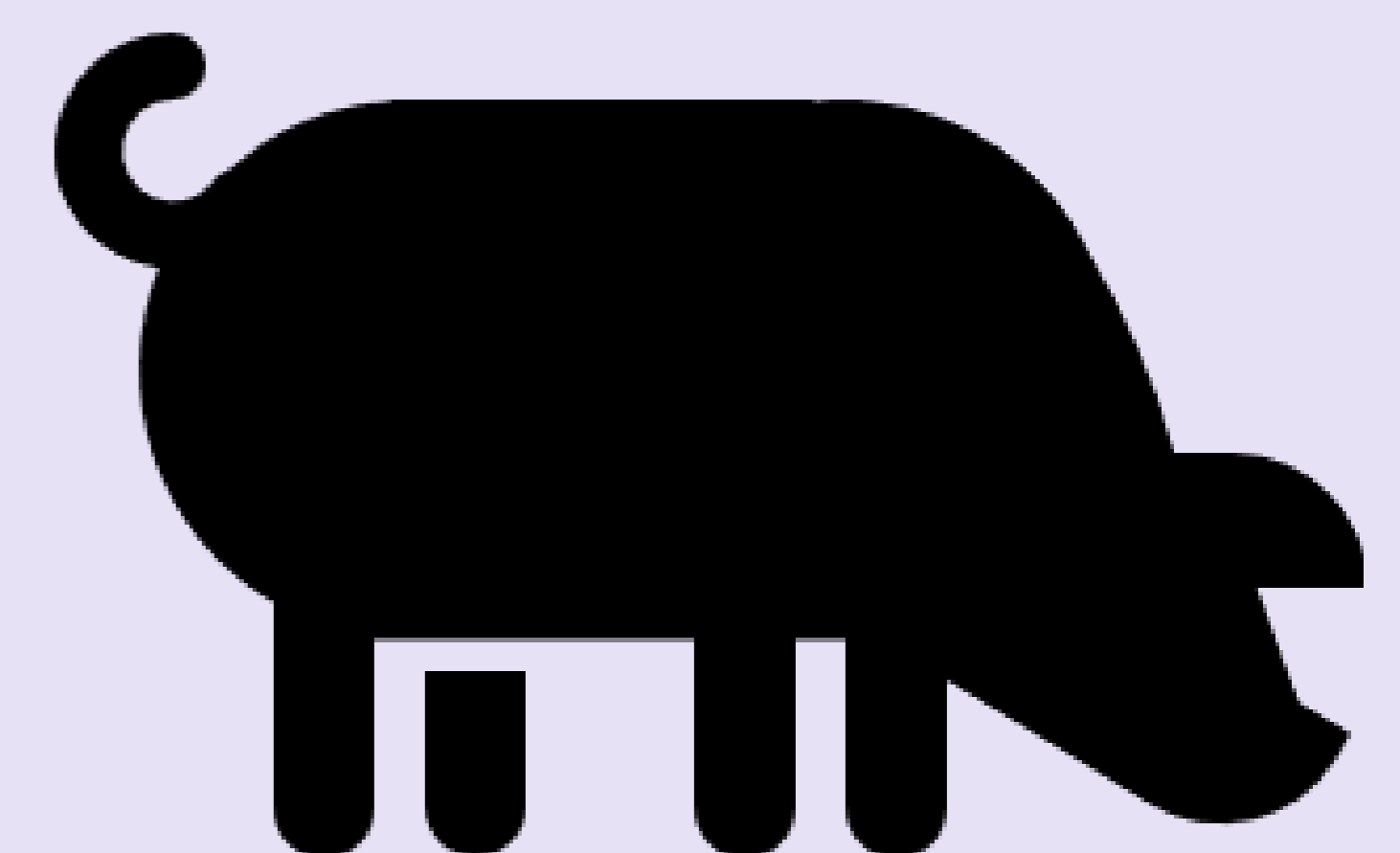
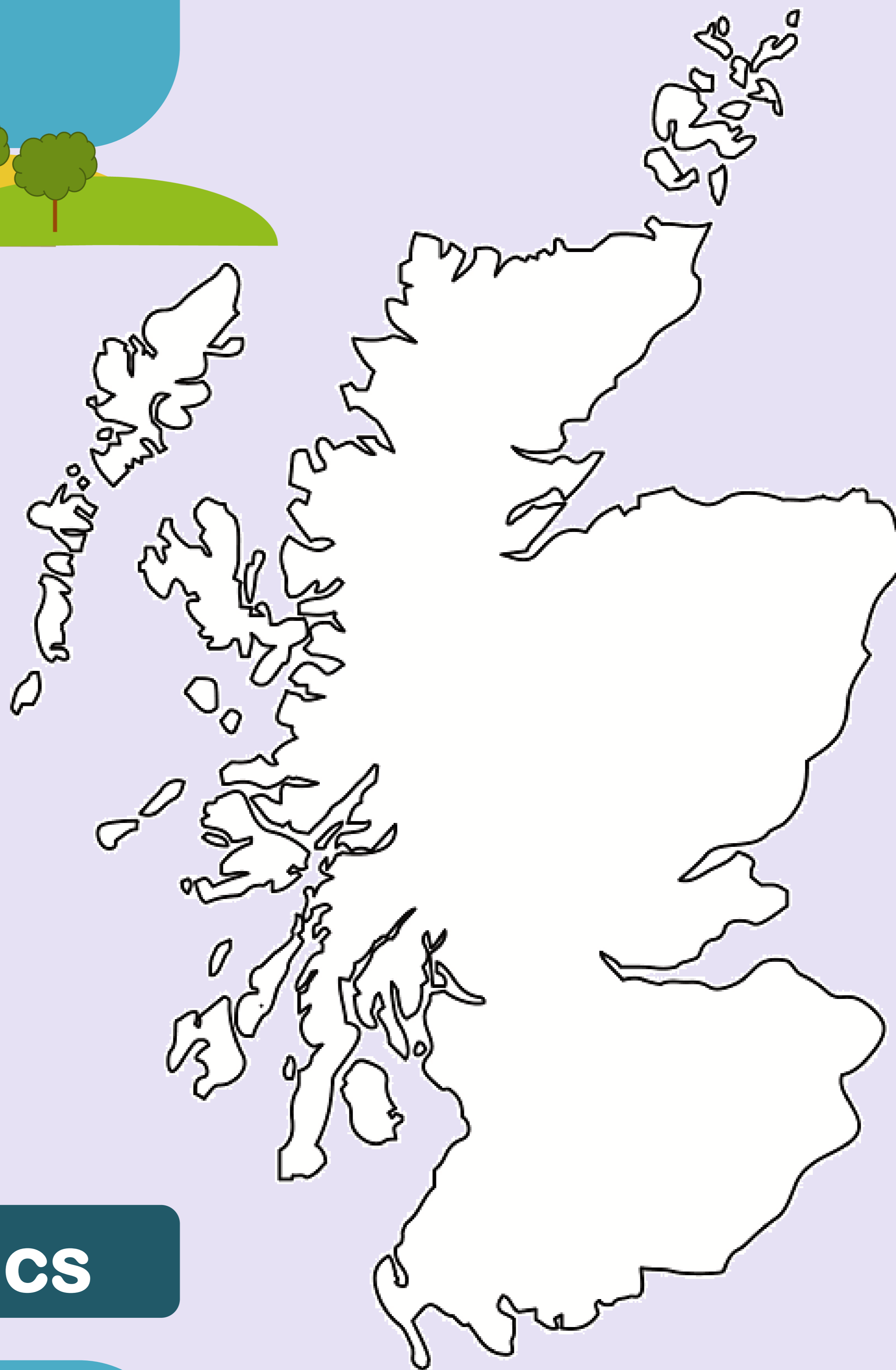
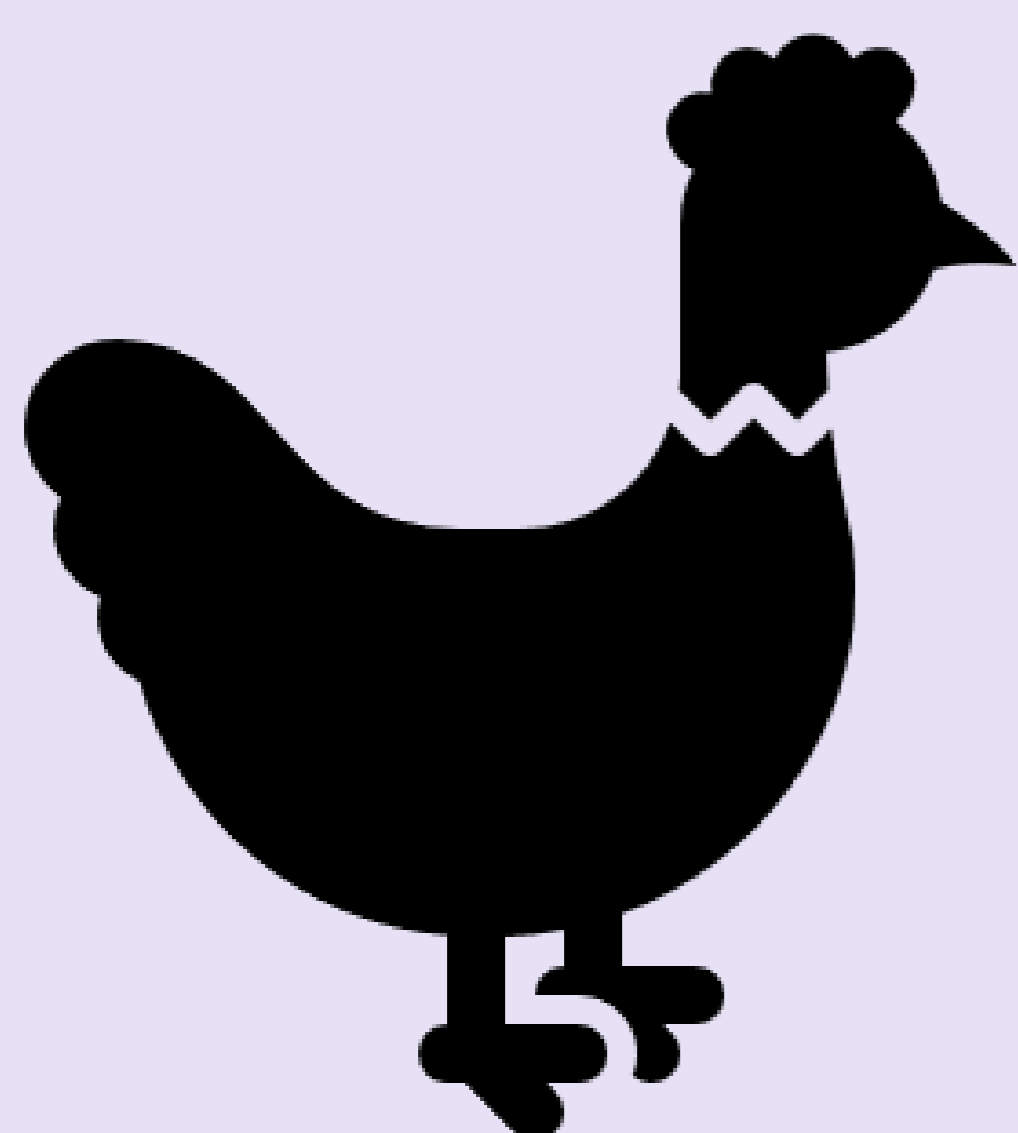
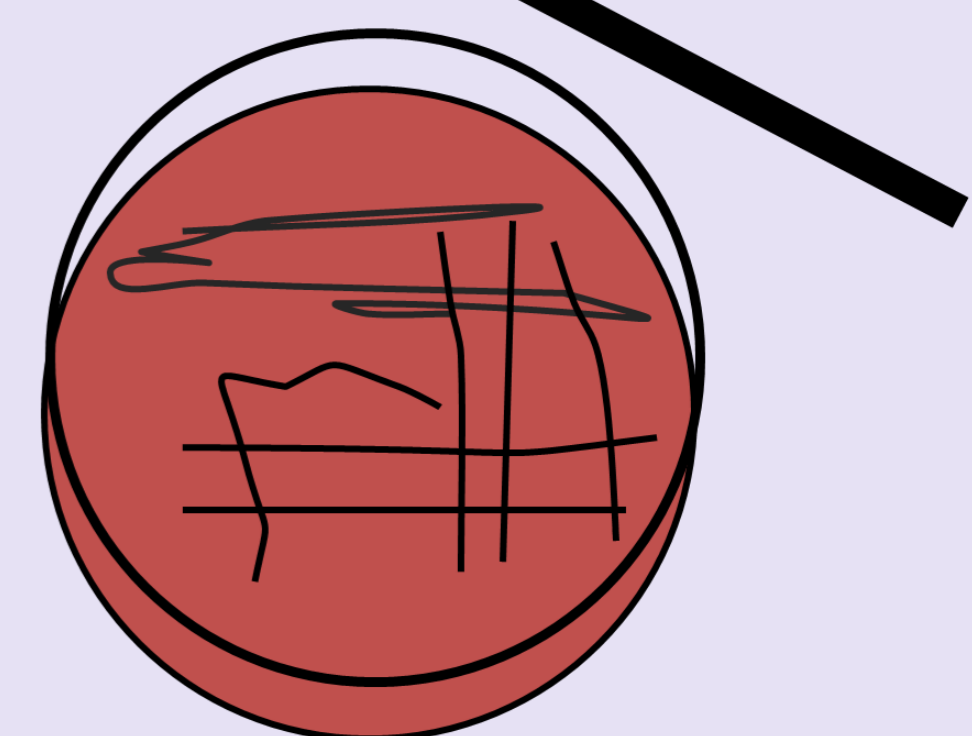
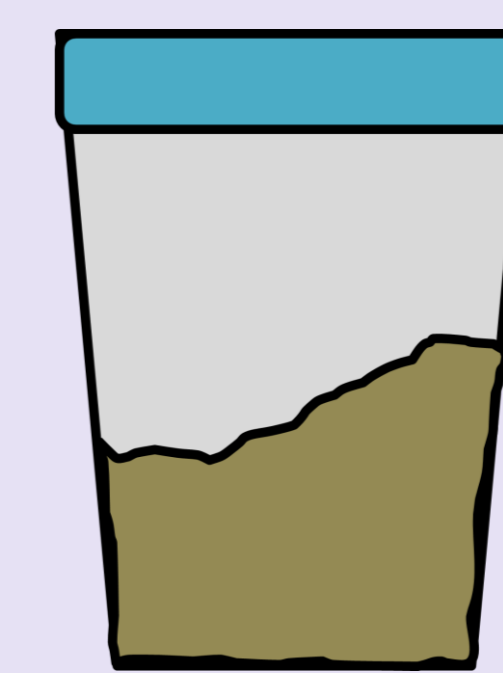
Per species, per month

Faeces

Semi-directed

convenience sampling

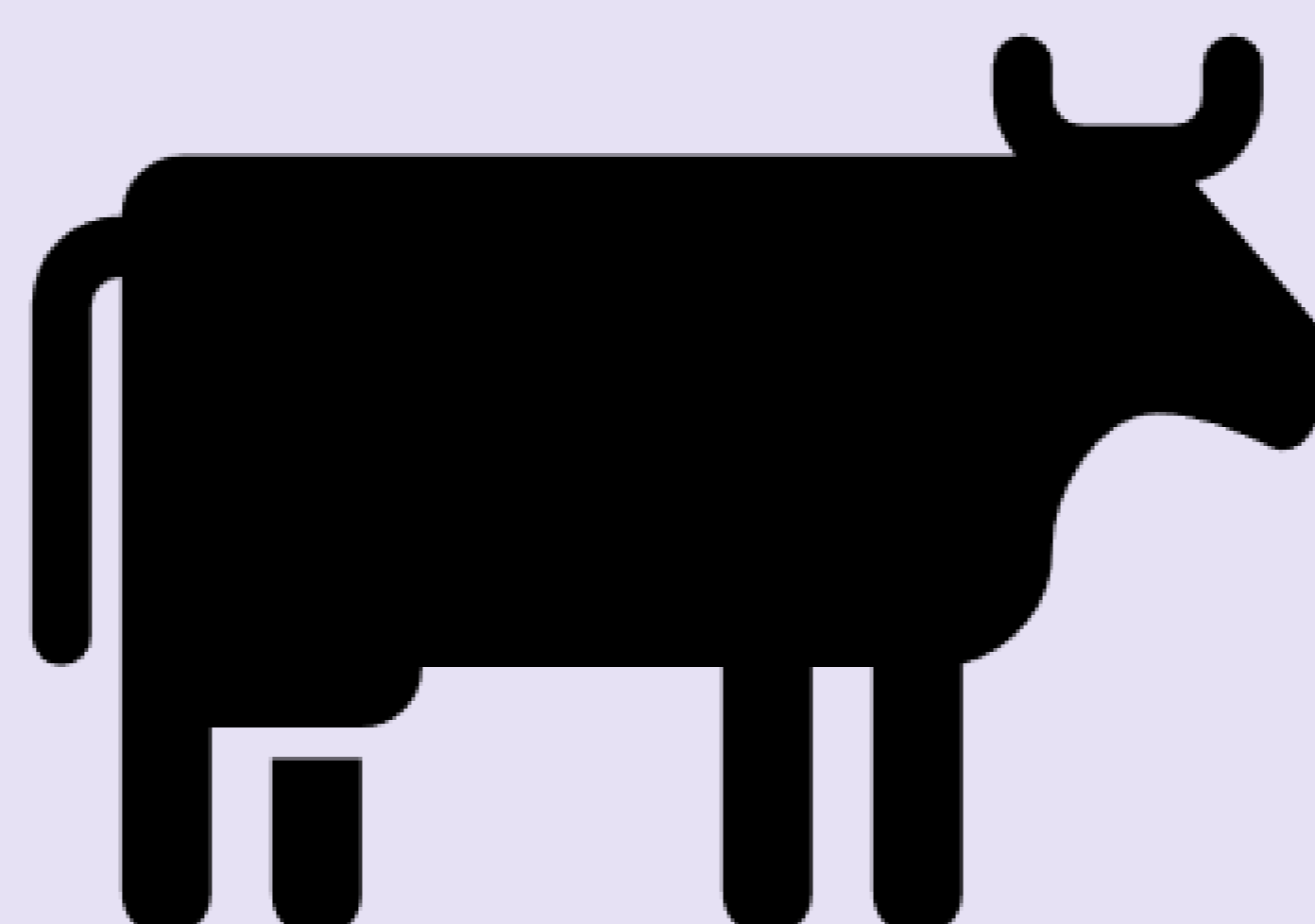
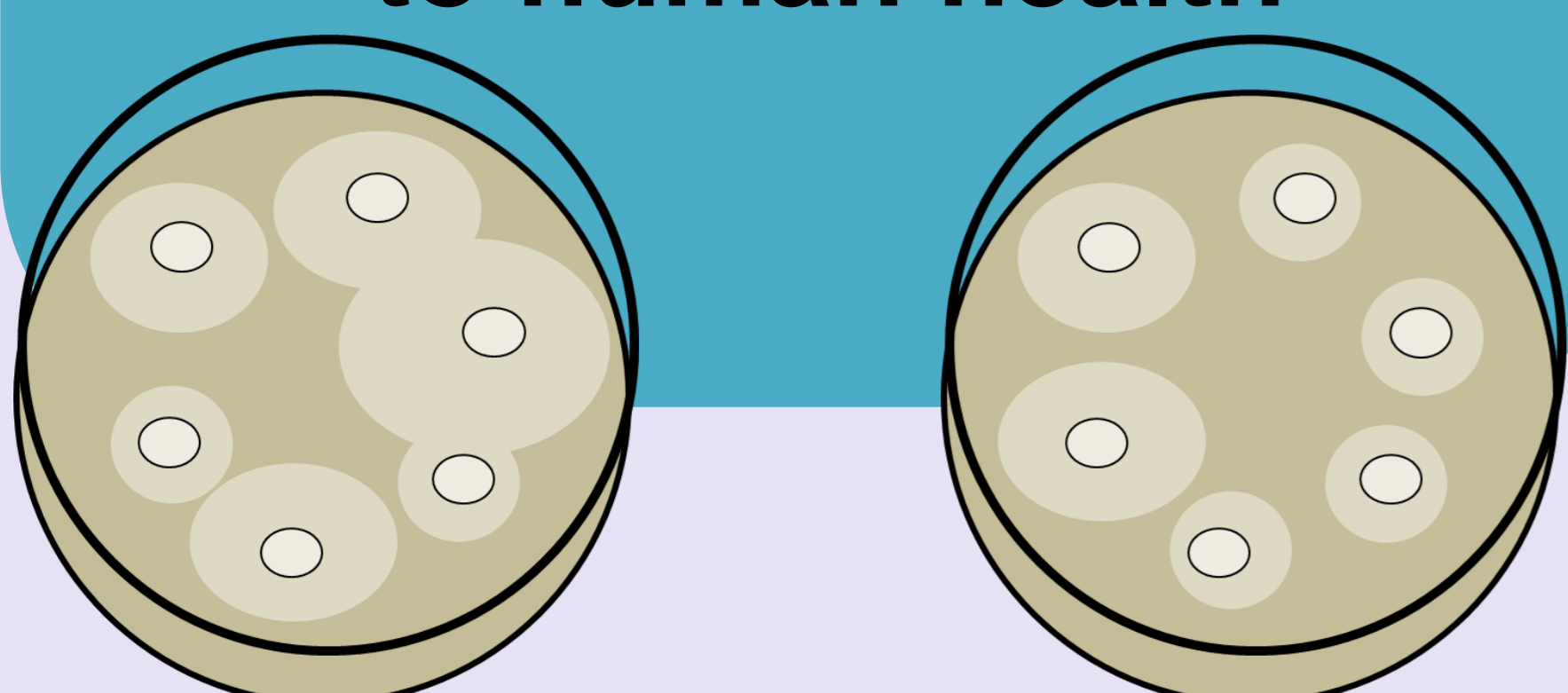
E. coli isolated



12 antibiotics

Antimicrobial sensitivity
testing

Antimicrobials relevant
to human health



Sequencing

PATH-SAFE programme

E. coli

Subset of isolates

Whole-Genome
Sequencing

