

Key elements of a One Health dog bite surveillance form for integrated bite case management (IBCM) in Uganda

Samuel George Okech^{1,2}, Rabina Ghimire³, Doreen Agado¹, Dickson Akankwatsa⁴, Felister Apio¹, Juliet Kiguli⁵, Clovice Kankya¹, Terence Odoch Amoki¹, Sonja Hartnack³, Salome Dürr⁶

¹College of Veterinary Medicine, Animal Resources and Biosecurity, Makerere University, ²Graduate School for Cellular and Biomedical Sciences, University of Bern, ³University of Zurich, ⁴Infectious Diseases Institute, Makerere University, ⁵College of Health Sciences, Makerere University, ⁶University of Bern

BACKGROUND

- **Rabies** is a neglected viral zoonotic disease that causes an estimated annual death of 59,000 humans globally
- Over 95% deaths are due to bites from infected dogs
- The disease is almost 100% fatal but timely post exposure prophylaxis (PEP) is life-saving
- Rabies is endemic in Uganda; dog bites and rabies surveillance are prioritised in the national strategy to **eliminate dog-mediated rabies by 2030**
- Surveillance to guide rabies control is weak, resulting in lack of rabies cases recorded, leading to a “**cycle of neglect**”
- Rabies needs to be surveilled in an integrated way in the animal and human sectors to inform prevention and control programmes
- Health professionals need animal-related information and circumstances of dog bites to guide subsequent treatment decisions
- Therefore, the design, validation, pilot testing, and reflection on experiences of using **IBCM is needed**

METHODOLOGY (participatory approach)

- A collaborative change research approach was applied to progressively develop key elements of the **(IBCM)** form
- A series of multidisciplinary and multisectoral stakeholder meetings held (**One Health**)

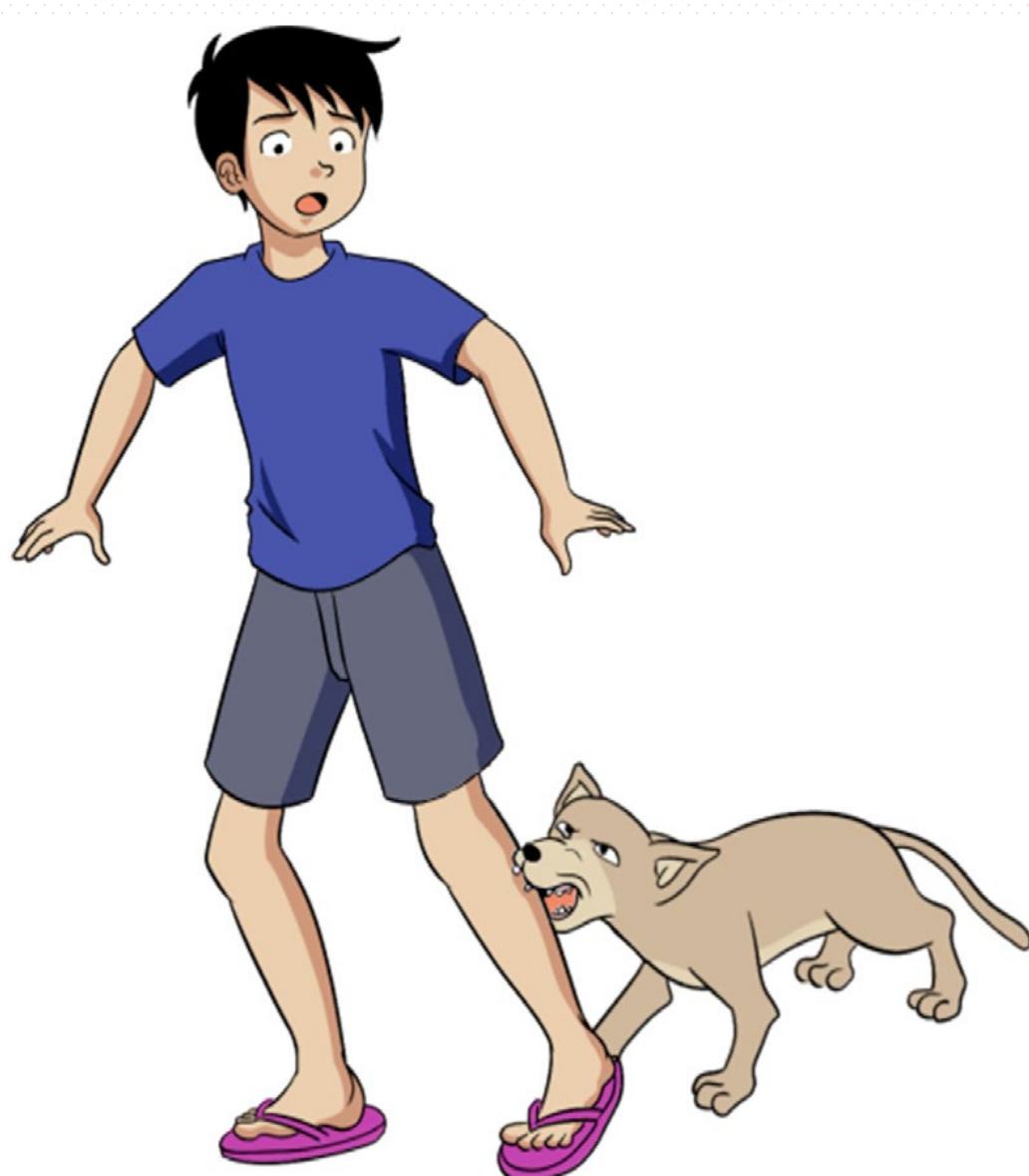


Stages in the stakeholder participation process		Output
STEP 1	Desk review of materials from Ministry of Agriculture, Animal Industry & Fisheries; Ministry of Health; Infectious Diseases Institute	Existing forms
STEP 2	One Health stakeholder workshop 1	Draft 1
STEP 3	Brainstorm in National One Health Platform meeting	Draft 2
STEP 4	One Health stakeholder workshop 2	Final Draft
STEP 5	Piloting, evaluation, scale out	Ongoing

OUTPUT (Key elements of the IBCM form)

Human information

- Victim personal & contact information
- Site/location of bite incident
- Location and type of wound on the body
- Date and circumstances of the bite
- Time elapsed since bite
- PrEP history
- First aid obtained/treatment given/referral
- Follow-up



Animal information

- Animal signalment and ownership/confinement status
- Owner’s details
- Site/location of bite incident & reporter
- Context of the bite & animal behaviour
- Animal vaccination record
- Animal health condition and fate
- Animal status after confinement/lab report
- Other animals involved

