

# Foot- and Mouth Disease – what makes our case in Germany so special?

Christoph Staubach<sup>1</sup>, Katja Schulz<sup>1</sup>, Kerstin Albrecht<sup>2</sup>, Annett Rudovsky<sup>2</sup>, Ronny Marquart<sup>1</sup>, Lisa Rogoll<sup>1</sup>, Jörn Gethmann<sup>1</sup>, Carola Sauter-Louis<sup>1</sup>

<sup>1</sup> Institute of Epidemiology, Friedrich-Loeffler-Institut, Germany

<sup>2</sup> Crisis centre of Brandenburg, Germany

## Maul- und Klauenseuche in Brandenburg

### Wasserbüffel in Hönow werden getötet

Bei einem Tierhalterbetrieb in Märkisch-Oderland ist die Maul- und Klauenseuche nachgewiesen worden. Wie geht es in Brandenburg weiter? Alle Infos im Liveblog.

LIVE • 10. Januar 2025 um 16:38 Uhr • Seelow

Ein Artikel von Ulf Grieger, Katharina Schmidt, Dirk Sohal, Kerstin Ewald

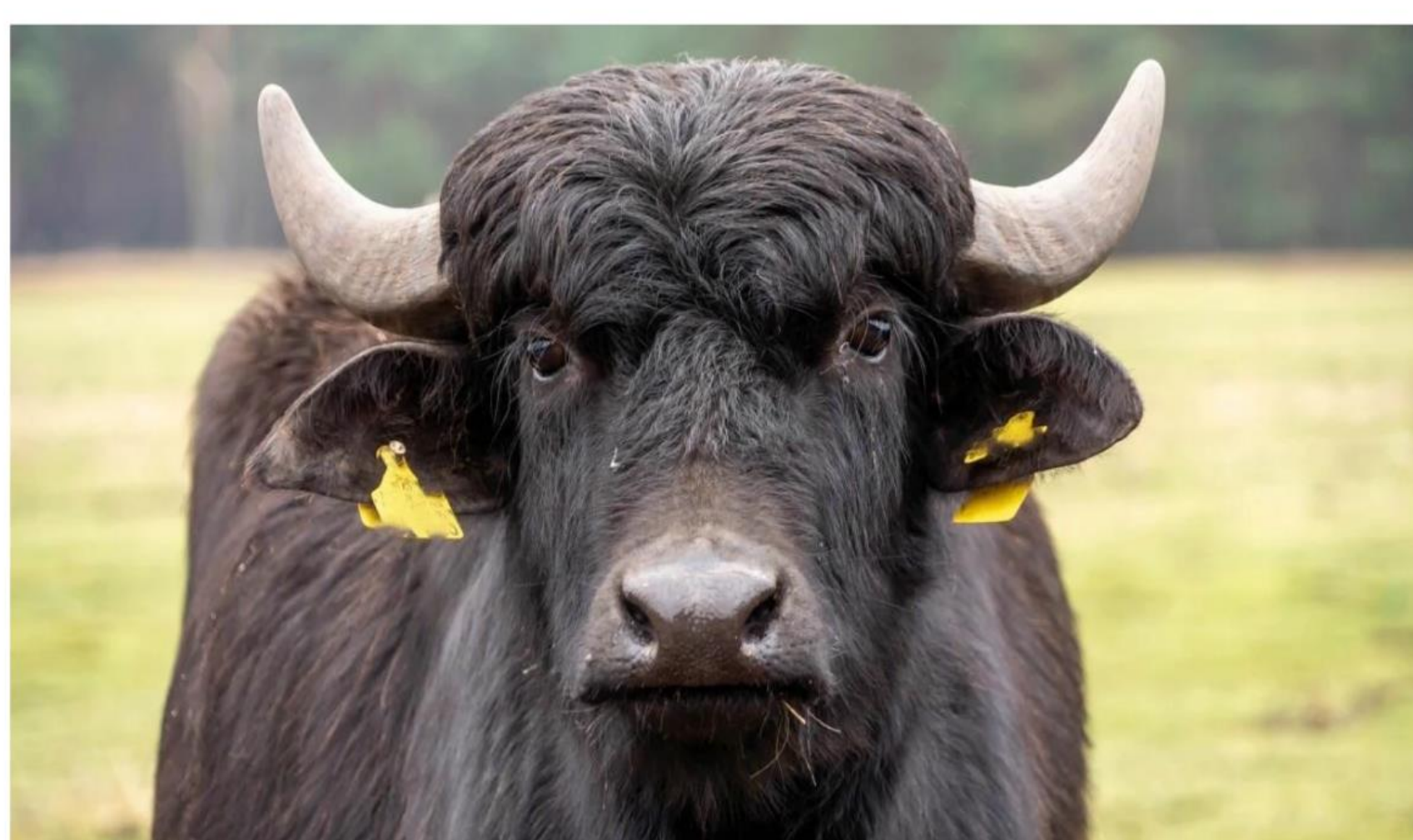


Fig 1. Newspaper article on FMD on 10<sup>th</sup> January 2025

## Background

10<sup>th</sup> January 2025: Confirmation of FMD in Germany in a herd of 14 water buffaloes



First case since 1988

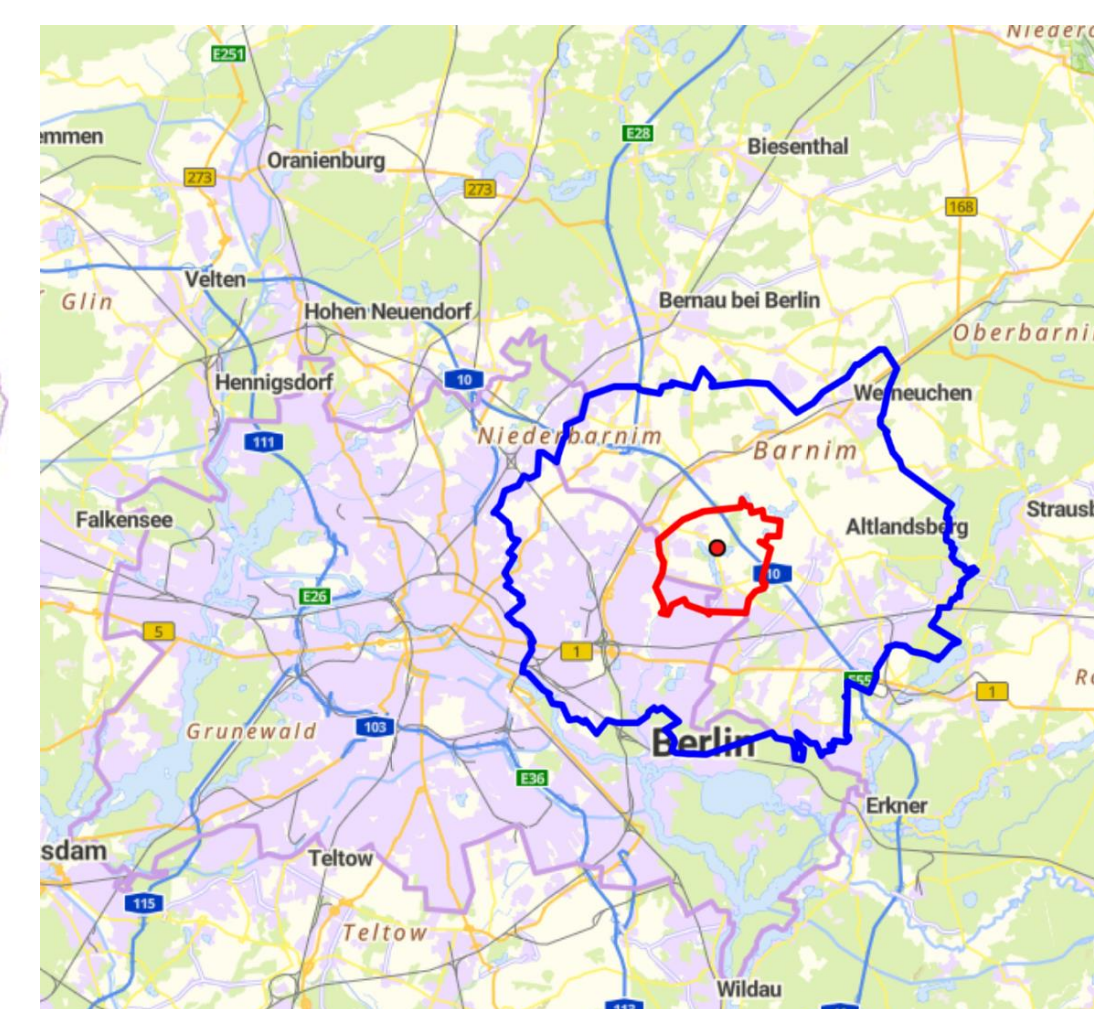


Fig 2. Location of the outbreak in the area of Berlin/Brandenburg

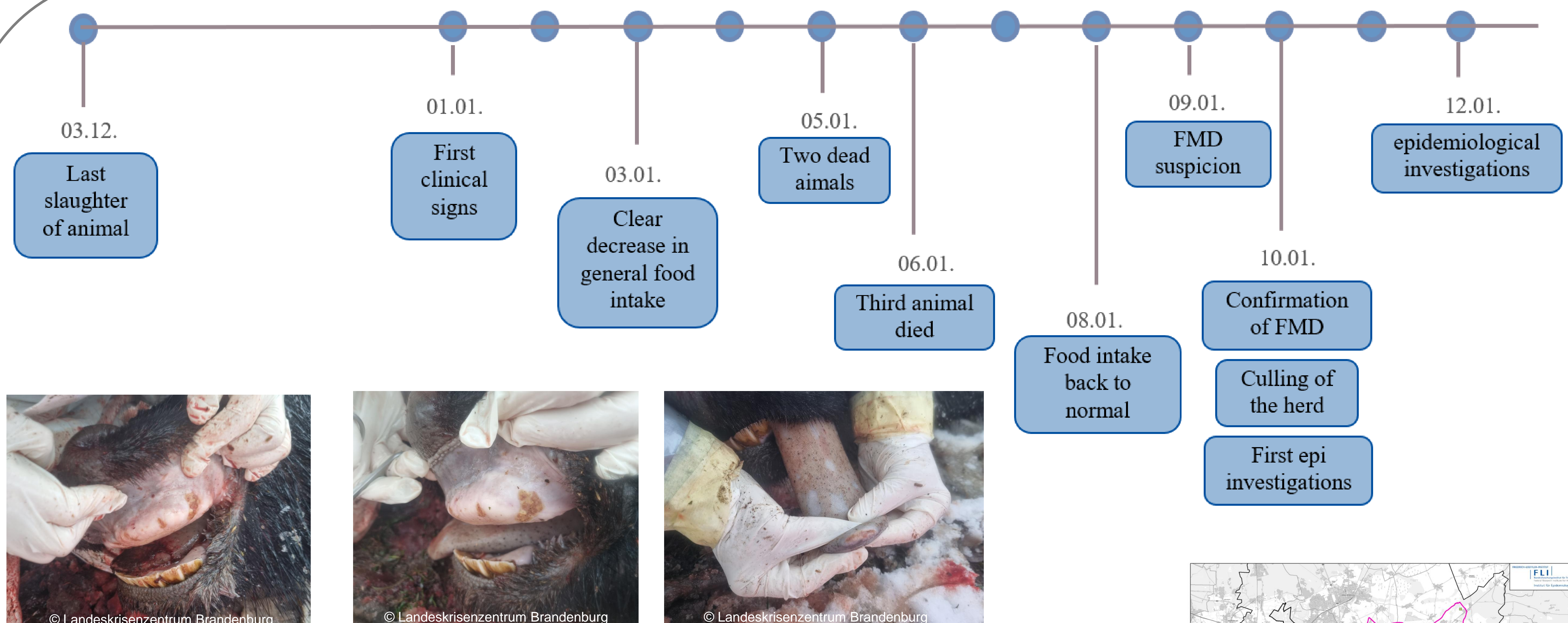


Fig 3. Timeline of epidemiological investigation and lesions seen in animals culled on 10<sup>th</sup> January 2025

Epidemiological investigations yielded **no indications** for introductions via

- Animal Purchase
- Semen
- Feed or bedding
- Vehicles / contaminated equipment
- Other farms in the neighbourhood
- Travel associated activities
- Wildlife

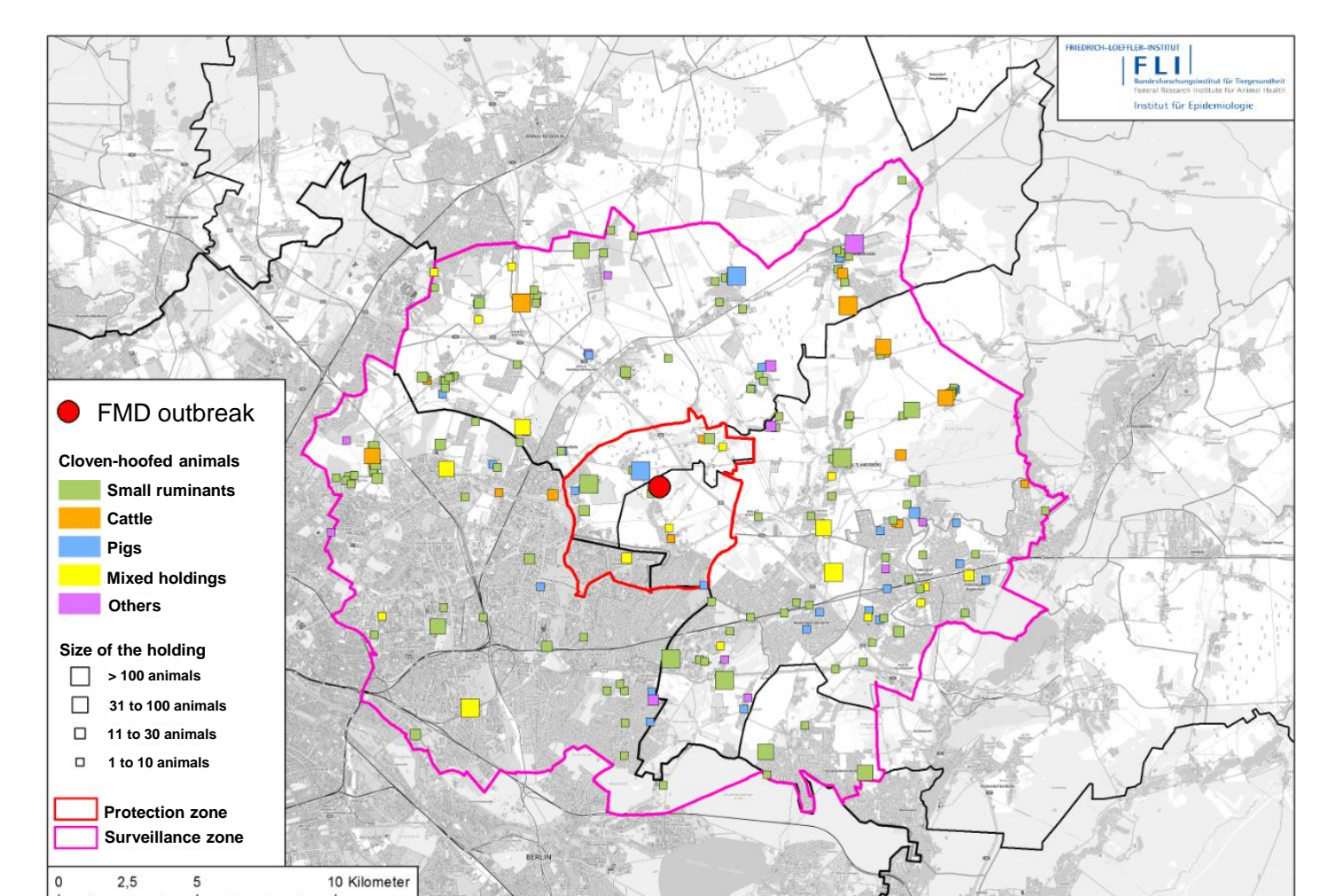


Fig 4. Animal holdings in the vicinity

## Conclusions

- One herd only
- Extremely low farm and animal density
- Low number of contacts
- Early detection of infection
- Swift action of the local authorities
- ‘Crisis-proven’ area affected
- Most likely introduction: contaminated animal products